



# St. Mary's RC Primary School

## Child protection and safeguarding policy

### September 2024

#### Vision:

We believe that every child is a gift from God, therefore, we aim to provide an outstanding and happy Catholic education which develops the 'whole child' whilst enabling them to reach their full potential.

#### Mission statement:

**We love God** ... so we follow the examples of Jesus

**We love learning** ... so we always do our very best in everything

**We love each other** ... so we treat each other as we want to be treated

Approved by:	Reviewed annually by Governors Autumn term	Date: September 2024
Last reviewed on:	September 2023	
Next review due by:	September 2025 (or earlier if amendments needed)	

## Contents

1. Underpinning legislation and statutory guidance.....	4
2. Aims .....	5
3. Definitions .....	6
4. Equality statement .....	6
5. Roles and responsibilities .....	7
6. Confidentiality .....	10
7. Recognising abuse and taking action.....	11
8. Online safety and the use of mobile technology.....	20
9. Notifying parents or carers .....	22
10. Pupils with special educational needs, disabilities or health issues .....	23
11. Pupils with a social worker .....	23
12. Looked-after and previously looked-after children .....	23
13. Complaints and concerns about school safeguarding policies .....	24
14. Record-keeping .....	24
15. Training.....	25
16 Partnership with parents	
17 Health and safety policy	
18 Site security	
19 Meeting the needs of pupils with medical conditions	
20 The design of the curriculum and healthy school	
21 School meals	
22 School uniform	
23 Inclusion Opportunities	
24 Behaviour policy	
25 Bullying	
26 Equality, Discrimination, racial and homophobic tolerance	
27 Safety of visitors to school	
28 Checking the identity and suitability of visitors	
29 Non-collection of visitors	
30 Staff	

<u>Links with other policies</u> .....	32
<u>Appendix 1: types of abuse</u> .....	33
<u>Appendix 2: safer recruitment and DBS checks – policy and procedures</u> .....	34
<u>Appendix 3: allegations of abuse made against staff</u> .....	39
<u>Appendix 4: specific safeguarding issues</u> .....	40

---

## School and local key contacts

ROLE	NAME	CONTACT DETAILS
Designated safeguarding lead (DSL)	Mrs Carmel Ruane	School: 01706378032 <a href="mailto:cruane@smrc-lit.co.uk">cruane@smrc-lit.co.uk</a> (if not in school and in an emergency, someone in school will be able to make contact via her mobile)
Deputy DSLs	Miss Christine Moore Mrs Jenny Heyes	<a href="mailto:cmoore@smrc-lit.co.uk">cmoore@smrc-lit.co.uk</a> <a href="mailto:jheyas@smrc-lit.co.uk">jheyas@smrc-lit.co.uk</a>
Chair of governors	Mr Tony Cragg	tc1970@btinternet.com
Safeguarding link governor	Mrs Pam Kelleher	pamelakelleher2@hotmail.co.uk
Local authority designated officer (LADO) for allegations against professionals	Louise Hurst	0300 3030350 <a href="mailto:Louise.hurst@rochdale.gov.uk">Louise.hurst@rochdale.gov.uk</a>
Education safeguarding officer	Hayley Reynolds	01706 925350 <a href="mailto:Hayley.Reynolds@rochdale.gov.uk">Hayley.Reynolds@rochdale.gov.uk</a>

ROLE	NAME	CONTACT DETAILS
EHASH	Multi agency complex early help and safeguarding hub	0300 303 0440 Out of Hours <b>0300 303 8875</b>

LA Prevent officer	Muhammad Abdulaleem	01706 926437 <a href="mailto:muhammad.abdulaleem@rochdale.gov.uk">muhammad.abdulaleem@rochdale.gov.uk</a>
Headteacher for the virtual school	Kirstie Rathbone	01706 925209 <a href="mailto:christopher.tyler@rochdale.gov.uk">christopher.tyler@rochdale.gov.uk</a>
Attendance & Safeguarding Officer (EWO's)	Katie Digiorgi	01706 925139 <a href="mailto:Katie.Digiorgi@Rochdale.gov.uk">Katie.Digiorgi@Rochdale.gov.uk</a>

## Worried About a Child?

All reports or enquiries concerning the welfare or safety of a child must go straight to EHASH on 0300 303 0440 as the first port of call. This applies to reports from council staff, the public, partners and outside agencies. All referrals are then to be sent to [ehash@rochdale.gov.uk](mailto:ehash@rochdale.gov.uk)

If a child is in immediate danger of being harmed, or if a child is home alone, the police should be called on 999.

## 1. Underpinning legislation and statutory guidance

This policy is based on the Department for Education's statutory guidance, [Keeping children safe in education 2023 \(publishing.service.gov.uk\)](#), [Working Together to Safeguard Children \(2018\)](#), and the [Governance Handbook](#).

We comply with this guidance and the arrangements agreed and published by our 3 local safeguarding partners via Rochdale Borough Safeguarding Children Partnership (RBSCP).

Local safeguarding partners, are identified in Keeping Children Safe in Education (and defined in the Children Act 2004, as amended by chapter 2 of the Children and Social Work Act 2017). They are responsible for child protection policy, procedure and guidance at a local level.

The local safeguarding arrangements are led by three statutory safeguarding partners:

- the local authority
- the integrated care board (ICB, previously clinical commissioning group or 'CCG')
- the police.

In line with RBSCP requirements, we adhere to Greater Manchester multi-agency safeguarding procedures [Welcome \(proceduresonline.com\)](#) and the Rochdale Children's Needs and Responses Framework [Rochdale Safeguarding Partnership Board - Children's Needs & Response Framework](#)

This policy is also based on the following legislation:

Section 175 of the [Education Act 2002](#), which places a duty on schools and local authorities to safeguard and promote the welfare of pupils

[The School Staffing \(England\) Regulations 2009](#), which set out what must be recorded on the single central record and the requirement for at least one person conducting an interview to be trained in safer recruitment techniques

[The Children Act 1989](#) (and [2004 amendment](#)), which provides a framework for the care and protection of children

Section 5B(11) of the Female Genital Mutilation Act 2003, as inserted by section 74 of the [Serious Crime Act 2015](#), which places a statutory duty on teachers to report to the police where they discover that female genital mutilation (FGM) appears to have been carried out on a girl under 18

[Statutory guidance on FGM](#), which sets out responsibilities with regards to safeguarding and supporting girls affected by FGM

[The Rehabilitation of Offenders Act 1974](#), which outlines when people with criminal convictions can work with children

Schedule 4 of the [Safeguarding Vulnerable Groups Act 2006](#), which defines what 'regulated activity' is in relation to children

[Statutory guidance on the Prevent duty](#), which explains schools' duties under the Counter-Terrorism and Security Act 2015 with respect to protecting people from the risk of radicalisation and extremism

[The Human Rights Act 1998](#), which explains that being subjected to harassment, violence and/or abuse, including that of a sexual nature, may breach any or all of the rights which apply to individuals under the [European Convention on Human Rights](#) (ECHR)

[The Equality Act 2010](#), which makes it unlawful to discriminate against people regarding particular protected characteristics (including disability, sex, sexual orientation, gender reassignment and race). This means our governors and headteacher should carefully consider how they are supporting their pupils with regard to these characteristics. The Act allows our school to take positive action to deal with particular disadvantages affecting pupils (where we can show it's proportionate). This includes making reasonable adjustments for disabled pupils. For example, it could include taking positive action to support girls where there's evidence that they're being disproportionately subjected to sexual violence or harassment

[The Public Sector Equality Duty \(PSED\)](#), which explains that we must have due regard to eliminating unlawful discrimination, harassment and victimisation. The PSED helps us to focus on key issues of concern and how to improve pupil outcomes. Some pupils may be more at risk of harm from issues such as sexual violence; homophobic, biphobic or transphobic bullying; or racial discrimination

The [Childcare \(Disqualification\) and Childcare \(Early Years Provision Free of Charge\) \(Extended Entitlement\) \(Amendment\) Regulations 2018](#) (referred to in this policy as the "2018 Childcare Disqualification Regulations") and [Childcare Act 2006](#), which set out who is disqualified from working with children

This policy also meets requirements relating to safeguarding and welfare in the [statutory framework for the Early Years Foundation Stage](#)

Policy documents and pathways relating to local processes and procedure can be found by visiting;

## 2. Aims

At St. Mary's, we recognise that safeguarding and promoting the welfare of children is everybody's responsibility and that the best interests of the child are paramount. As everyone who comes into contact with children and their families has a vital role to play, this policy has been developed to provide a shared understanding of expectations.

We maintain an attitude that 'it could happen here' where safeguarding is concerned therefore, the school aims to ensure that:

Appropriate action is taken in a timely manner to safeguard and promote children's welfare

All staff are aware of (and feel confident to exercise) their statutory responsibilities with respect to safeguarding

We have a skilled and knowledgeable workforce who are properly training in recognising and reporting safeguarding issues and who understand local early help processes where this would be more beneficial.

## 3. Definitions

**As defined in Working Together to Safeguard Children (2023) guidance;**

**Safeguarding and promoting the welfare of children means:**

Providing help and support to meet the needs of children as soon as problems emerge.

Protecting children from maltreatment, whether that is within or outside the home, including online.

Preventing impairment of children's mental and physical health or development.

Ensuring that children grow up in circumstances consistent with the provision of safe and effective care.

Promoting the upbringing of children with their birth parents, or otherwise their family network, through a kinship care arrangement, whenever possible and where this is in the best interests of the children

Taking action to enable all children to have the best outcomes in line with the outcomes set out in the Children's Social Care National Framework. [Children's social care: national framework - GOV.UK \(www.gov.uk\)](https://www.gov.uk/government/publications/childrens-social-care-national-framework)

***Essentially, safeguarding is how you ensure the safety of the children in your care. It is the responsibility of every professional that comes into contact with a child, not simply those who work in education.***

**The term Abuse** is defined as;

*"A form of maltreatment of a child. Somebody may abuse or neglect a child by inflicting harm, or by failing to act to prevent harm. Children may be abused in a family or in an institutional or community setting by those known to them or, more rarely, by others. Abuse can take place wholly online, or technology may be used to facilitate offline abuse. Children may be abused by an adult or adults, or another child or children".*

**Typically abuse can be either one of, or a combination of these four categories:**

- Physical
- Sexual
- Emotional
- Neglect

Children includes everyone under the age of 18.

The 3 **safeguarding partners** make arrangements to work together to safeguard and promote the welfare of local children, including identifying and responding to their needs:

In Rochdale, our partnership is the RBSCP and our local safeguarding procedures are found at; [Rochdale Safeguarding Partnership -](#)

#### Language:

*“The way the ‘world’ talks about us, acts as a guide to how others view us, and gives us a narrative to identify with,”*

**Victim** is a widely understood and recognised term and is used interchangeably in this document, but we understand that not everyone who has been subjected to abuse considers themselves a victim, or would want to be described that way. When managing an incident, we will be prepared to use any term that the child involved feels most comfortable with.

**Alleged perpetrator(s)** and **perpetrator(s)** are also widely used and recognised terms. However, we will think carefully about what terminology we use (especially in front of children) as, in some cases, abusive behaviour can be harmful to the perpetrator too. We will decide what’s appropriate and which terms to use on a case-by-case basis.

## 4. Equality statement

Some children have increased vulnerabilities, and additional barriers can exist for some children with respect to recognising or disclosing abuse or harm. We are committed to actively promoting anti-discriminatory practice and aim to recognise and respond appropriately to children’s diverse circumstances. We ensure that all children are afforded protection, regardless of any barriers they may face.

We give special consideration to children who:

Have special educational needs (SEN) or disabilities or health conditions (see section 10)

Are young carers

May experience discrimination due to their age, disability, sexual orientation, sex, gender, race, religion and belief. (Which are deemed as protected characteristics within the Equality Act, 2010)

Have English as an additional language

Are known to be living in difficult situations – for example, temporary accommodation or where there are issues such as substance abuse or domestic abuse

Are at risk of female genital mutilation, sexual or criminal exploitation, ‘honour based’ violence or abuse, forced marriage, or radicalisation

Are asylum seekers

Are at risk due to either their own or a family member’s mental health needs

Have a social worker (see section 11)

Are looked after or previously looked after (see section 12)

Are absent or missing from home or education repeatedly and / or for prolonged periods

Whose parent/carers has expressed an intention to remove them from school to be home educated

Staff at our school will provide safe spaces for all pupils, including those with protected characteristics, to speak out and share concerns.

## 5. Roles and responsibilities

Safeguarding and child protection is **everyone's** responsibility. This policy applies to all staff, volunteers and governors in the school and is consistent with the procedures of the 3 safeguarding partners. Our policy and procedures also apply to extended school and off-site activities.

Our school is committed to playing a crucial role in preventative education. This is in the context of a whole-school approach to preparing pupils for life in modern Britain and a culture of zero tolerance of sexism, misogyny/misandry, homophobia, biphobia and sexual violence/harassment. This will be underpinned by our:

- ✓ Behaviour policy
- ✓ Pastoral and peer support systems
- ✓ Planned programme of relationships, sex and health education (RSHE), appropriate to the age and developmental stage of our children, which is inclusive and delivered regularly, tackling issues such as:
  - Healthy and respectful relationships
  - Boundaries and consent
  - Stereotyping, prejudice and equality
  - Body confidence and self-esteem
  - IF RELEVANT; The concepts of, and laws relating to, sexual consent, sexual exploitation, abuse, grooming, coercion, harassment, rape, domestic abuse, so-called honour-based violence such as Honour based violence and abuse (HBVA), forced marriage and female genital mutilation (FGM) and how to access support
  - How to recognise an abusive relationship
  - What constitutes sexual harassment and sexual violence and why they're always unacceptable

### 5.1 All staff

To ensure all members of our school community fully understand their safeguarding responsibilities, it is our expectation that staff read and ensure they understand part 1 and annex B of the Department for Education's statutory safeguarding guidance, [Keeping children safe in education 2023 \(publishing.service.gov.uk\)](https://www.publishing.service.gov.uk/government/uploads/system/uploads/attachment_data/file/652722/Keeping-children-safe-in-education-2023.pdf) and review this guidance at least annually.

There may however, be limited circumstances where senior leadership determine that an individual staff member or group of staff would obtain a better understanding of their safeguarding responsibilities by instead reading the condensed version of part 1, which is held at Annex A of [Keeping children safe in education 2023 \(publishing.service.gov.uk\)](https://www.publishing.service.gov.uk/government/uploads/system/uploads/attachment_data/file/652722/Keeping-children-safe-in-education-2023.pdf). This would only be appropriate in exceptional circumstances, following approval by the Governing Board and with additional training provided to supplement and reinforce key messages to these staff groups.

All staff will sign a declaration at the beginning of each academic year to say that they have reviewed the guidance. All staff will be aware of:

Our systems which support safeguarding, including this child protection and safeguarding policy, the staff code of conduct (guidance for safe working practice), the role and identity of the designated safeguarding lead (DSL) and deputies, the behaviour policy, the attendance policy and the safeguarding response to children who go missing from education

The early help assessment process and their role in it, including identifying emerging needs, liaising with the DSL, and sharing information with other professionals to enable the right support to be offered to families at the earliest opportunity.

The process for making referrals to local authority children's social care and for statutory assessments that may follow a referral, including the role they might be expected to play.



What to do if they identify a safeguarding issue or a child tells them they are being abused or neglected, including specific issues such as HBVA, FGM, Domestic Abuse and how to maintain an appropriate level of confidentiality while liaising with relevant professionals.

The signs of different types of abuse and neglect, as well as specific safeguarding issues, such as child-on-child abuse, child sexual exploitation (CSE), child criminal exploitation (CCE), indicators of being at risk from or involved with serious youth violence, HBVA, FGM and radicalisation.

The importance of reassuring victims that they are being taken seriously and that they will be supported and kept safe

The fact that children can be at risk of harm inside and outside of their home, at school and online and that disclosure is rarely a straightforward process.

The fact that children who are (or who are perceived to be) lesbian, gay, bi or trans, (LGBT) or those with other protected characteristics, can be targeted by other children

What to look for, including non-verbal disclosures, to identify children who need help or protection

Section 15 and appendix 4 of this policy outline in more detail how staff are supported to do this.

## **5.2 The designated safeguarding lead (DSL)**

The DSL is a member of the senior leadership team. Our DSL is Mrs Carmel Ruane, Headteacher. The DSL takes lead responsibility for child protection and wider safeguarding in the school.

During term time, the DSL will be available during school hours for staff to discuss any safeguarding concerns. When the DSL is absent, our DDSs [Miss Christine Moore, DHT, and Mrs Jenny Heyes, AHT] will act as cover, their contact details are on the first page of this policy.

Outside of term time, our school has the following arrangements in place in respect of safeguarding contacts: we have a school based family support worker, Mrs Danielle Smith, who is available during school holidays at regular intervals and messages can be left on the school mobile for her. More urgent safeguarding needs should be directed to social care and these details are shared with parents before holidays and on our school 'out of office' email message.

We recognise the highly challenging role of the DSL and will ensure our DSL has time, funding, ongoing training and professional development opportunities, adequate resources and wider support to:

Provide advice, support and their expertise to other staff on child welfare and child protection matters

Take part in strategy discussions and inter-agency meetings and/or support other staff to do so

Contribute to the assessment of children

Promote and encourage a culture of listening to children and taking account of their wishes and feelings.

Maintain clear and confidential records of safeguarding and child protection concerns, actions and planning.

Hold and share relevant information in line with relevant data protection legislation.

Refer suspected cases, as appropriate, to the relevant body (local authority children's social care, Channel programme, Disclosure and Barring Service, LADO, and/or police), and support staff who make such referrals directly.

Act as a point of contact for partner agencies and families

Promote positive relationships with parents and families and support their ability to fully engage in the processes in order to uphold the welfare of their children, even when families may be facing difficult and challenging situations.

Have a good understanding of harmful sexual behaviour in children and local pathways to access advice, undertake safety planning and support all children involved

Be aware that children must have an 'appropriate adult' to support and help them in the case of a police investigation or search

- ✓ Know who its cohort of children who have or have had a social worker are, and to promote a culture of high aspiration for this cohort as well as to champion reasonable adjustments to ensure they reach their full potential.

Be able to understand the unique risks associated with online safety and be confident that they have the relevant knowledge and up to date capability required to keep children safe whilst they are online at school or college

The DSL will also keep the headteacher informed of any issues, and liaise with local authority case managers and designated officers for child protection concerns as appropriate.

The full responsibilities of the DSL and DDSs are set out in their job description.

### 5.3 The governing board

The governing board will:

- ✓ Receive appropriate safeguarding and child protection (including online) training at induction. This training should equip them with the knowledge to provide strategic challenge to test and assure themselves that the safeguarding policies and procedures in place in school are effective and support the delivery of a robust whole school approach to safeguarding ensuring that safeguarding and child protection are at the forefront and underpin all relevant aspects of process and policy development. Their training should be regularly updated
- ✓ Evaluate and approve this policy at each review, ensuring it complies with the law, and hold the headteacher to account for its implementation
- ✓ Be aware of its obligations under the Human Rights Act 1998, the Equality Act 2010 (including the Public Sector Equality Duty), and our school's local multi-agency safeguarding arrangements
- ✓ Provide appropriate oversight and challenge to ensure school have the appropriate level of security protection procedures in place in order to safeguard their systems, staff and learners and ensure a review of the effectiveness of these procedures takes place periodically to keep up with evolving cyber-crime technologies
- ✓ Appoint a link Governor to monitor the effectiveness of this policy in conjunction with the full governing board. This is always a different person from the DSL

Ensure:

- The DSL has the appropriate status and authority to carry out their job, including time, funding, training, resources and support
- Online safety is a running and interrelated theme within the whole-school approach to safeguarding and related policies
- The leadership team and relevant staff are aware of and understand the IT filters and monitoring systems in place, manage them effectively and know how to escalate concerns
- The school has procedures to manage any safeguarding concerns (no matter how small) or allegations that do not meet the harm threshold (low-level concerns) about staff members (including supply staff, volunteers and contractors). Appendix 3 of this policy covers this procedure
- That school safeguarding responses recognise that children with SEND, or certain medical or physical health conditions, can face additional barriers to abuse or neglect being recognised

Where another body is providing services or activities (regardless of whether or not the children who attend these services/activities are children on the school roll):

- Seek assurance that the other body has appropriate safeguarding and child protection policies/procedures in place, and inspect them if needed
- Make sure there are arrangements for the body to liaise with the school about safeguarding arrangements, where appropriate

- Make sure that safeguarding requirements are a condition of using the school premises, and that any agreement to use the premises would be terminated if the other body fails to comply

The chair of governors will act as the 'case manager' in the event that an allegation of abuse is made against the headteacher, where appropriate (see appendix 3).

All governors will read Keeping Children Safe in Education in its entirety.

Section 15 of this policy has information on how governors are supported to fulfil their role.

## 5.4 The headteacher

The headteacher is responsible for the implementation of this policy, including:

Ensuring that staff (including temporary staff) and volunteers:

- Are informed of our systems which support safeguarding, including this policy, as part of their induction
- Understand and follow the procedures included in this policy, particularly those concerning referrals of cases of suspected abuse and neglect

Communicating this policy to parents/carers when their child joins the school and via the school website

Ensuring that the DSL has appropriate time, funding, training and resources, and that there is always adequate cover if the DSL is absent.

Ensuring that all staff undertake appropriate safeguarding and child protection training, and updating the content of the training regularly

Acting as the 'case manager' in the event of an allegation of abuse made against another member of staff or volunteer, where appropriate (see appendix 3)

Making decisions regarding all low-level concerns, though they may wish to collaborate with the DSL.

Ensuring the relevant staffing ratios are met, where applicable

Making sure each child in the Early Years Foundation Stage is assigned a key person

## 5.5 Virtual school heads

The Virtual School Head is the statutory lead (**Children and Families Act 2014**) within the local authority. They have a strategic responsibility for ensuring that arrangements are in place to improve educational experiences and outcomes of children in care and young people previously cared for. Their role has now also been extended to include those children who have currently, or have previously had a social worker.

In Rochdale, our Virtual Head is Kirstie Rathbone, whose contact details are contained at the front of this policy. Kirstie and the team will identify and engage with key professionals, e.g. DSLs, SENCOs, social workers, mental health leads and others to champion support and aim to improve outcomes for this cohort of vulnerable children.

## 6. Confidentiality

Our school recognises that timely information sharing is essential to effective safeguarding and staff are informed that fears about appropriate sharing of information must never stand in the way of the need to promote the welfare, and protect the safety of children. Our staff are aware that they can never promise a child that they will not tell anyone about a report of abuse and that they have a professional responsibility to pass on concerns about a child to the DSL.

School handles personal information about children in line with the provisions of the Data Protection Act (DPA) 2018 and GDPR however, we are clear that this legislation does not prevent or limit the sharing of

information for the purposes of keeping children safe. If school is unsure whether it is appropriate for consent to be dispensed with, they will seek advice and consultation with EHASH.

School follows the DfE guidance; [information sharing advice for safeguarding practitioners](#) and [data protection toolkit for schools](#)

If staff are in any doubt about sharing information, they should speak to the designated safeguarding lead (or a deputy)

## 7. Recognising abuse and taking action

Staff, volunteers and governors must follow the procedures set out below in the event of a safeguarding issue.

Please note – in this and subsequent sections, you should take any references to the DSL to mean “the DSL or deputy DSL”.

### 7.1 If a child is suffering or likely to suffer significant harm, or in immediate danger

Within a school, referrals should usually be made via the DSL, who is the person with the complete safeguarding picture in relation to children. Therefore if you believe a child is suffering or likely to suffer from significant harm, you should **immediately** locate the DSL in person to share this information.

In the event that the DSL is unavailable, or if a child is in immediate danger, make a referral to children’s social care and/or the police **immediately**. **Anyone can make a referral**. Tell the DSL as soon as possible if you make a referral directly.

Referrals to children’s social care in Rochdale should be made via telephone in the first instance, to the Complex Early Help and Safeguarding Hub (EHASH) on 0300 303 0440. Advice will be provided about what actions need to be taken, which may include submission of a multi-agency referral form (MARF).

Further information can be found at [Rochdale LA website - reporting concerns about a child](#)

### 7.2 If a child makes a disclosure to you

If a child discloses a safeguarding issue to you, you should:

Listen to and believe them. Allow them time to talk freely and do not ask leading questions

Stay calm and do not show that you are shocked or upset

Tell the child they have done the right thing in telling you. Do not tell them they should have told you sooner

Explain what will happen next and that you will have to pass this information on. Do not promise to keep it a secret

Find the DSL and share the information straight away. It is not sufficient to leave a note on a desk, write an email or simply record within the school system. If appropriate, ask the child if they would like to speak to the DSL with you.

Write up your conversation as soon as possible, using the child’s own words. Provide facts, be clear if you are stating your professional opinion. Include information about impact on the child – eg if they are tearful, appear anxious, appear unaffected. Ensure details are precise – date, time, location and give context including what happened prior to the disclosure, was there an identified trigger etc.

Pass on the record to the DSL. Alternatively, if appropriate, make a referral to children’s social care and/or the police directly (see 7.1), and tell the DSL as soon as possible that you have done so. You will also be advised on the necessity to inform or liaise with the child’s parent/s, carers where appropriate to do so. Aside from these people, do not disclose the information to anyone else unless told to do so by a relevant authority involved in the safeguarding process

Consider what follow up support the child may require in school and who would be the most appropriate person to offer this.

Bear in mind that disclosure is rarely straightforward and some children may:

- ✓ Not feel ready, or be able to tell someone that they are being abused, exploited or neglected
- ✓ Not recognise their experiences as harmful
- ✓ Feel embarrassed, humiliated or threatened. This could be due to their vulnerability, disability, sexual orientation and/or language barriers

None of this should stop you from having 'professional curiosity' and speaking to the DSL if you have concerns about a child.

### **7.3 If you discover that so called honour based abuse is has taken place, if FGM has taken place or a pupil is at risk of FGM**

Honour based Violence and abuse encompasses incidents or crimes which have been committed to protect or defend the honour of the family and/or the community, including female genital mutilation (FGM), forced marriage, and practices such as breast ironing. Abuse committed in the context of preserving 'honour' often involves a wider network of family or community pressure and can include multiple perpetrators. It is important to be aware of this dynamic and additional risk factors when deciding what form of safeguarding action to take. All forms of HBVA are abuse (regardless of the motivation) and should be handled and escalated as such. Professionals in all agencies, and individuals and groups in relevant communities, need to be alert to the possibility of a child being at risk of HBVA, or already having suffered HBVA.

Keeping Children Safe in Education explains that FGM comprises "all procedures involving partial or total removal of the external female genitalia, or other injury to the female genital organs".

FGM is illegal in the UK and a form of child abuse with long-lasting, harmful consequences. It is also known as 'female genital cutting', 'circumcision' or 'initiation'.

Possible indicators that a pupil has already been subjected to FGM, and factors that suggest a pupil may be at risk, are set out in appendix 4 of this policy.

**Any teacher** who either:

- Is informed by a girl under 18 that an act of FGM has been carried out on her; or
- Observes physical signs which appear to show that an act of FGM has been carried out on a girl under 18

Must immediately report this to the police, personally. This is a mandatory statutory duty, and teachers will face disciplinary sanctions for failing to meet it. Teachers are able to obtain support from the DSL, who will also contact the EHASH, or support the teacher to do so.

**Any other member of staff** who discovers that an act of FGM appears to have been carried out on a **pupil under 18** must immediately speak to the DSL, who will contact Police and EHASH.

Staff must never examine pupils.

The duty for teachers mentioned above does not apply in cases where a pupil is *at risk* of FGM or FGM is suspected but is not known to have been carried out.

**Any member of staff** who suspects a pupil is *at risk* of FGM or suspects that FGM has been carried out must speak to the DSL and follow our local safeguarding procedures held at; [RBSCP multi agency FGM procedure](#).

### **Forced Marriage**

Forcing a person into a marriage is a crime in England and Wales. A forced marriage is one entered into without the full and free consent of one or both parties and where violence, threats or any other form of coercion is used to cause a person to enter into a marriage. Schools and colleges can play an important role in safeguarding children from forced marriage.

- In addition, since February 2023 it has also been a crime to carry out any conduct whose purpose is to cause a child to marry before their eighteenth birthday, even if violence, threats or another form of coercion are not used. As with the existing forced marriage law, this applies to non-binding, unofficial 'marriages' as well as legal marriages. Should you become alerted to the possibility that a child may be expected to marry in any situation, you should refer to your safeguarding duties as in section 7.1.

## **7.4 If you have concerns about a child (as opposed to believing a child is suffering or likely to suffer from harm, or is in immediate danger)**

Figure 1 below, before section 7.7, illustrates the procedure to follow if you have any concerns about a child's welfare.

Where possible, speak to the DSL first to agree a course of action.

If in exceptional circumstances the DSL is not available, this should not delay appropriate action being taken. Speak to a member of the senior leadership team and/or take advice from local authority children's social care by telephoning EHASH. You can also seek advice at any time from the NSPCC helpline on 0808 800 5000. Share details of any actions you take with the DSL as soon as practically possible.

Make a referral to local authority children's social care directly, if appropriate (see 'Referral' below). Share any action taken with the DSL as soon as possible.

### **Early Help**

Where mandatory referring is not appropriate, school or college may decide that the children involved do not require referral to statutory services but may benefit from early help. Early help means providing support as soon as a problem emerges at any point in a child's life. This can be managed internally where appropriate to do so. Where a child would benefit from co-ordinated early help, an early help inter-agency assessment should be arranged. If an early help assessment is appropriate, the DSL will generally lead on liaising with other agencies and setting up an inter-agency assessment as appropriate. Staff may be required to support other agencies and professionals in an early help assessment, in some cases acting as the lead professional for the family.

The DSL will keep the case under constant review and the school will consider a referral to local authority children's social care if the situation does not seem to be improving. Timelines of interventions will be monitored and reviewed in line with local recording systems and with a link to the schools Neighbourhood Team.

### **Referral**

If it is appropriate to refer the case to local authority children's social care or the police, the DSL will make the referral or support you to do so.

If you make a referral directly (see section 7.1), you must tell the DSL as soon as possible.

EHASH will assess referrals against the Children's Needs and Responses Framework and will advise what course of action to take. The DSL or person who made the referral must follow up with the local authority if this information is not made available, and ensure outcomes are properly recorded.

If the child's situation does not seem to be improving after the referral, or if there is dispute about the outcome of a referral, the DSL or person who made the referral must follow the Greater Manchester escalation procedures to ensure their concerns have been addressed and that the child's situation improves [RBSCP professional dispute resolution procedure](#)

## **7.5 If you have concerns about extremism**

If a child is not suffering or likely to suffer from significant harm, or in immediate danger, where possible speak to the DSL first to agree a course of action.

If in exceptional circumstances the DSL is not available, this should not delay appropriate action being taken. Speak to a member of the senior leadership team and/or seek advice from local authority children's social care. Make a referral to local authority children's social care directly, if appropriate (see 'Referral' above). Inform the DSL or deputy as soon as practically possible after the referral.

Where there is a concern, the DSL will consider the level of risk and decide which agency to make a referral to. This could include [Channel](#), the government's programme for identifying and supporting individuals at risk of being drawn into terrorism, or the local authority children's social care team. Schools can seek advice and guidance from the Local Authority Equality and Community Cohesion Officer, Muhammad Abdalaleem on 01706 926437.

The Department for Education also has a dedicated telephone helpline, 020 7340 7264, which school staff and governors can call to raise concerns about extremism with respect to a pupil. You can also email [counter.extremism@education.gov.uk](mailto:counter.extremism@education.gov.uk). Note that this is not for use in emergency situations.

In an emergency, call 999 or the confidential anti-terrorist hotline on 0800 789 321 if you:

- Think someone is in immediate danger
- Think someone may be planning to travel to join an extremist group
- See or hear something that may be terrorist-related

## 7.6 If you concerns around mental health

Mental health difficulties can, in some cases, be an indicator that a child has suffered or is at risk of suffering abuse, neglect or exploitation.

Staff will be alert to behavioural signs that suggest a child may be experiencing mental health difficulties or be at risk of deteriorating mental health.

If you have concern for a child's mental health that is also a safeguarding concern, take immediate action by following the steps in section 7.4.

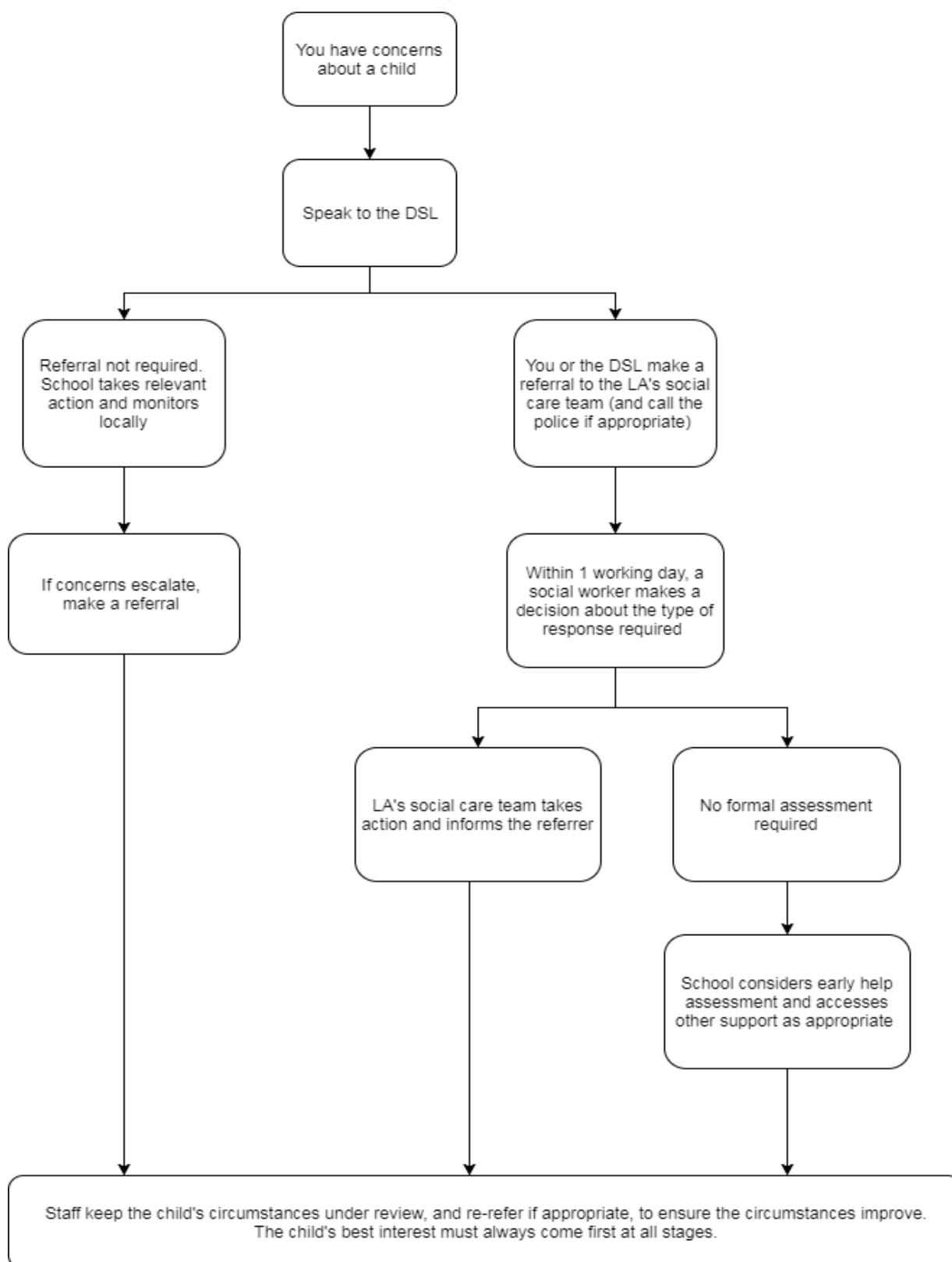
If you have concerns about a child's mental health that is **not** also a safeguarding concern, speak to the DSL to agree a course of action, which may include referral to local support services or additional pastoral support within school.

Our school Mental Health Lead is Mrs Jenny Heyes. She has attended a wealth of training and will support and guide anyone regarding suitable support and/or next steps, including in school support or referrals. Jenny has implemented whole school pro active approach to mental health and wellbeing – see our 'Mindful Movement curriculum for 2023-24. See provision from Mentally Healthy Schools, Education Psychology team and the DfE guidance on [mental health and behaviour in schools](#).



**Figure 1: procedure if you have concerns about a child's welfare (as opposed to believing a child is suffering or likely to suffer from harm, or in immediate danger)**

(Note – if the DSL is unavailable, this should not delay action. See section 7.4 for what to do.)





## 7.7 Concerns about a staff member, supply teacher, volunteer or contractor

If you have concerns about a member of staff (including a supply teacher, volunteer or contractor), or an allegation is made about a member of staff (including a supply teacher, volunteer or contractor) posing a risk of harm to children, speak to the headteacher as soon as possible. If the concerns/allegations are about the headteacher, speak to the chair of governors.

The headteacher/chair of governors will then follow the procedures set out in appendix 3, if appropriate.

Where you believe there is a conflict of interest in reporting a concern or allegation about a member of staff (including a supply teacher, volunteer or contractor) to the headteacher, report it directly to the local authority designated officer (LADO). The contact details for the LADO are on the first page of this policy.

Regarding Early years provision, where appropriate, the school will inform Ofsted of the allegation and actions taken, within the necessary timescale (see appendix 3 for more detail).

## 7.8 Allegations of abuse made against other pupils

We recognise that children are capable of harming or abusing their peers. Abuse will never be tolerated or passed off as “banter”, “just having a laugh” or “part of growing up”, as this can lead to a culture of unacceptable behaviours and an unsafe environment for pupils.

All child-on-child abuse is unacceptable and will be taken seriously.

Most cases of pupils hurting other pupils will be dealt with under our school’s behaviour policy, but this child protection and safeguarding policy will apply to any allegations that raise safeguarding concerns. This might include where the alleged behaviour:

Is serious, and potentially a criminal offence

Could put pupils in the school at risk

Is violent

Involves pupils being forced to use drugs or alcohol

Involves sexual exploitation, sexual abuse or sexual harassment, such as indecent exposure, sexual assault, upskirting or sexually inappropriate pictures or videos (including the sharing of nudes and semi-nudes)

See appendix 4 for more information about child-on-child abuse.

### **Procedures for dealing with allegations of child-on-child abuse involving harmful sexual behaviour**

If a pupil makes an allegation of sexually abusive behaviour against another pupil:

You must record the allegation and tell the DSL, but do not investigate it

The DSL will discuss the incident with relevant staff within school, eg Head, Pastoral Officer etc to gain a picture of what happened. School should utilise relevant guidance and tools, (eg NSPCC Hackett continuum [Understanding sexualised behaviour in children | NSPCC Learning](#)) to assess the level of severity in the behaviour and must record their decision and rationale for any outcome.

The DSL may consult with Youth Justice Team and partner agencies about any concerns related to developmentally inappropriate sexual behaviour at weekly virtual triage meetings.

Where there is an allegation of developmentally inappropriate behaviour that is harmful or abusive, or if there is a pattern of sexualised behaviour, school must contact EHASH for telephone consultation. If it is clear that a criminal offence has taken place eg sexual assault, school must seek advice from EHASH about how this should be reported to the Police.

The DSL will put a safety plan into place for all children involved (including the victim(s), the child(ren) against whom the allegation has been made and any others affected) with a named person they can talk to if needed.

The Local Authority have suggested the following document when considering safety planning for children after such an incident takes place.

[Safety planning in education: A guide for professionals supporting children following incidents of harmful sexual behaviour \(csacentre.org.uk\)](https://www.csacentre.org.uk/safety-planning-in-education-a-guide-for-professionals-supporting-children-following-incidents-of-harmful-sexual-behaviour)

This will include considering school transport/travel to and from school, less structured times of the school day eg break time, lunch, after school activities, outdoor learning and educational visits, assembly and transition times where children may mix more widely. School can seek input and specialist advice from Youth Justice Team, who have expertise in harmful sexual behaviour.

The DSL will contact relevant support services, eg children and adolescent mental health services (CAMHS), HCRG Care (previously Virgin care) as appropriate. School may seek advice from the Early Help Locality Team about which services may be relevant to support the needs of the children impacted.

Help and advice for dealing with this type of allegation is also available from the CSA centre for expertise: [Helping education settings identify and respond to concerns - CSA Centre](#)

### **Creating a supportive environment in school and minimising the risk of child-on-child abuse**

We recognise the importance of taking proactive action to minimise the risk of child-on-child abuse, and of creating a supportive environment where victims feel confident in reporting incidents.

To achieve this, we will:

Challenge any form of derogatory or sexualised language or inappropriate behaviour between children, including consensual or non-consensual requesting or sending of sexual, nude or semi nude images.

Be vigilant to issues that particularly affect different genders – for example, sexualised or aggressive touching or grabbing towards female pupils, and initiation or hazing type violence with respect to boys.

Ensure our curriculum helps to educate pupils about respectful behaviour and consent

Ensure pupils are able to easily and confidently report abuse using our reporting systems (as described in section 7.10 below)

Ensure staff reassure victims that they are being taken seriously

Be alert to reports of sexual violence and/or harassment that may point to environmental or systemic problems that could be addressed by updating policies, processes and the curriculum, or could reflect wider issues in the local area that should be shared with safeguarding partners. This may include the use of technology, AI, Chat GP and other forms of online platforms.

Support children who have witnessed sexual violence, especially rape or assault by penetration. We will do all we can to make sure the victim, alleged perpetrator(s) and any witnesses are not bullied or harassed

Consider intra familial harms and any necessary support for siblings following a report of sexual violence and/or harassment

Ensure staff are trained to understand:

- How to recognise the indicators and signs of child-on-child abuse, and know how to identify it and respond to reports
- That even if there are no reports of child-on-child abuse in school, it does not mean it is not happening – staff should maintain an attitude of “it could happen here”
- That if they have any concerns about a child’s welfare, they should act on them immediately rather than wait to be told, and that victims may not always make a direct report. For example:
  - Children can show signs or act in ways they hope adults will notice and react to
  - A friend may make a report
  - A member of staff may overhear a conversation
  - A child’s behaviour might indicate that something is wrong
- That certain children may face additional barriers to telling someone because of additional vulnerabilities, disability, gender, ethnicity and/or sexual orientation

- That a pupil harming another child could in some situations, be a sign that the child is being abused themselves, and that this would fall under the scope of this policy in order to effectively safeguard that child also.
- The important role they have to play in preventing child-on-child abuse and responding where they believe a child may be at risk from it
- That they should speak to the DSL if they have any concerns
- That social media or technology is likely to play a role in the fall-out from any incident or alleged incident, including for potential contact between the victim, alleged perpetrator(s) and friends from either side

The DSL will work closely with behaviour leads to provide support at the same time as taking any disciplinary action (if relevant) in respect of children that have harmed others.

Disciplinary action can be taken while other investigations are going on, e.g. by the police. The fact that another body is investigating or has investigated an incident doesn't (in itself) prevent our school from making informed decisions about what has happened and imposing behaviour sanctions accordingly. We will consider these matters on a case-by-case basis, taking into account whether:

- ✓ Taking action would prejudice an investigation and/or subsequent prosecution – we will liaise with the police and/or LA children's social care to determine this
- ✓ There are circumstances that make it unreasonable for us to reach our own view about what happened while an independent investigation is ongoing

## 7.9 Sharing of nudes and semi-nudes

If school staff are made aware of an incident involving the consensual or non-consensual sharing of nude or semi-nude images/videos (also known 'youth produced sexual imagery'), they must report it to the DSL immediately.

Staff must **not**:

View, copy, print, share, store or save the imagery yourself, or ask a pupil to share or download it. If staff have already viewed the imagery by accident, they must report this to the DSL.

Delete the imagery or ask the pupil to delete it

Ask the pupil(s) involved in the incident to disclose information regarding the imagery (this is the DSL's responsibility)

Share information about the incident with other members of staff, the pupil(s) it involves or their, or other, parents and/or cares

Say or do anything to blame or shame any young people involved

Staff should explain that they need to report the incident, and reassure the pupil(s) that they will receive support and help from the DSL.

The law criminalising indecent images of children was created to protect children and young people from adults seeking to sexually abuse them or gain pleasure from their sexual abuse. It was not intended to criminalise children and young people. Therefore, School will endeavour to ensure wherever possible that this does not happen, however it must be appreciated that sharing of nude, semi-nude images of children is in fact breaking the law. As a school we understand that this can often be the result of their natural curiosity about sex and their exploration of relationships. Therefore, engaging in the taking or sharing of nudes and semi-nudes may not always be 'harmful behaviour'. We understand this will be different for all children and young people. Situations will be considered on a case by case context, considering what is known about the children and young people involved and if there is an immediate risk of harm. We will also consult with agencies and refer to existing guidance.

[Sharing nudes and semi-nudes: advice for education settings working with children and young people - GOV.UK \(www.gov.uk\)](https://www.gov.uk/guidance/sharing-nudes-and-semi-nudes-advice-for-education-settings-working-with-children-and-young-people)

## **Initial review meeting**

Following a report of an incident, the DSL will hold an initial review meeting with appropriate school staff – this may include the staff member who reported the incident and the safeguarding or leadership team that deals with safeguarding concerns. This meeting will consider the initial evidence and aim to determine:

Whether there is an immediate risk to pupil(s)

If a referral needs to be made to the police and/or children's social care

If it is necessary to view the image(s) in order to safeguard the young person (in almost all cases, images or videos should not be viewed) Clarity on this should be sought from the follow guidance (sec 2.10) [Sharing nudes and semi-nudes: advice for education settings working with children and young people - GOV.UK \(www.gov.uk\)](https://www.gov.uk/guidance/sharing-nudes-and-semi-nudes-advice-for-education-settings-working-with-children-and-young-people)

What further information is required to decide on the best response.

Whether the image(s) has been shared widely and via what services and/or platforms (this may be unknown)

Whether immediate action should be taken to delete or remove images or videos from devices or online services

Any relevant facts about the pupils involved which would influence risk assessment

If there is a need to contact another school, college, setting or individual

Whether to contact parents or carers of the pupils involved (in most cases parents/carers should be involved)

The DSL will make an immediate contact into EHASH if:

The incident involves an adult

There is reason to believe that a young person has been coerced, blackmailed or groomed, or if there are concerns about their capacity to consent (for example owing to special educational needs)

What the DSL knows about the images or videos suggests the content depicts sexual acts which are not expected for the young person's developmental stage, or are violent

The imagery involves sexual acts and any pupil in the images or videos is under 13

The DSL has reason to believe a pupil is at immediate risk of harm owing to the sharing of nudes and semi-nudes (for example, the young person is presenting as suicidal or self-harming)

If none of the above apply, the DSL may wish to make a referral to the weekly HSB triage meeting or consult with EHASH for advice and support. All decision making must be recorded within school safeguarding records.

## **Further review by the DSL**

If threshold is not met for a strategy meeting, the DSL may utilise the Youth Justice triage service to obtain support and advice about assessing the risks, safety planning and supporting children.

Guidance on this process can be found here; [hsb\\_guidance\\_document\\_rbcp.docx\\_april\\_23\\_f.pdf \(rochdalesafeguarding.com\)](https://www.ropchdalesafeguarding.com/hsb_guidance_document_rbcp.docx_april_23_f.pdf)

They will hold interviews with the pupils involved (if appropriate).

If at any point in the process there is a concern that a pupil has been harmed or is at risk of harm, a telephone consultation will take place with EHASH immediately.

## **Informing parents/carers**

The DSL will inform parents/carers at an early stage and keep them involved in the process, unless there is a good reason to believe that involving them would put the pupil at risk of harm.

## **Referring to the police**

If it is necessary to refer an incident to the police, school will initially seek telephone advice with the EHASH team and if appropriate, report the incident via 101. In high schools, it may be appropriate to refer to the school based officer.

## **Recording incidents**

All incidents of sharing of nudes and semi-nudes, and the decisions made in responding to them, will be recorded. The record-keeping arrangements set out in section 14 of this policy also apply to recording these incidents.

## **Curriculum coverage**

Pupils are taught about the issues surrounding the sharing of nudes and semi-nudes as part of our RSHE and Computing/E safety curriculum at an age appropriate level. We use resources from Ten Ten scheme but also other recommended online educational resources eg PSHE Association or NSPCC or CEOP materials etc

Teaching covers the following in relation to the sharing of nudes and semi-nudes:

What it is

How it is most likely to be encountered

The consequences of requesting, forwarding or providing such images, including when it is and is not abusive and when it may be deemed as online sexual harassment

Issues of legality

The risk of damage to people's feelings and reputation

Pupils also learn the strategies and skills needed to manage:

Specific requests or pressure to provide (or forward) such images

The receipt of such images

This policy on the sharing of nudes and semi-nudes is also shared with pupils so they are aware of the processes the school will follow in the event of an incident.

## **7.10 Reporting systems for our pupils**

Where there is a safeguarding concern, we will take the child's wishes and feelings into account when determining what action to take and what services to provide.

We recognise the importance of ensuring pupils feel safe and comfortable to come forward and report any concerns and/or allegations.

To achieve this, we will:

Put systems in place for pupils to confidently report abuse

Ensure our reporting systems are well promoted, easily understood and easily accessible for pupils

Make it clear to pupils that their concerns will be taken seriously, and that they can safely express their views and give feedback

- ✓ Each class has a worry box where children can write a concern in. Children also know that they can talk to staff with a friend or about a friend.
- ✓ Pupils are given a real voice in school and taught that their voice will always be heard and what steps can be taken to protect them from harm.
- ✓ These messages are constantly reinforced in RSHE lessons and class circle times and assemblies. Childline also do sessions with our older children and their contact details are displayed within school.
- ✓ We have a very strong Catholic caring ethos of love and protection and this is taught in every aspect of school life including a strong Spiritual, Moral, Social and Cultural (SMSC) and our RSHE curriculum, including taught sessions and spontaneous sessions in response to certain incidents.
- ✓ Such issues as personal safety are discussed at School Council meetings to ensure we get pupil voice on such issues.

## 8. Online safety and the use of mobile technology

**Our early years providers** cover the use of mobile phones **and cameras** in their child protection and safeguarding policy (as per paragraph 3.4 of the [statutory framework for the Early Years Foundation Stage](#)),

We recognise the importance of safeguarding children from potentially harmful and inappropriate online material, and we understand that technology is a significant component in many safeguarding and wellbeing issues. We take a whole school approach to ensuring we protect and educate pupils, students, and staff in their use of technology and have in place established mechanisms to identify, intervene in, and escalate any concerns where appropriate.

To address this, our school aims to:

Have robust processes and policies in place to ensure the online safety of pupils, staff, volunteers and governors.

Protect and educate the whole school community in its safe and responsible use of technology, including mobile and smart technology.

Set clear guidelines for the use of mobile phones for the whole school community.

Updated guidance makes it clear that all staff receive training on the expectations, applicable roles and responsibilities in relation to the filtering and monitoring of online information.

The designated safeguarding lead should take lead responsibility for understanding the filtering and monitoring systems and processes in place. However each school will have a designated Governor and member of SLT that maintain oversight of this.

Within this policy you will find information on appropriate filtering and monitoring on school devices and school networks.

The guidance signposts the Department for Education's new filtering and monitoring standards (DfE, 2023b), which support schools to have effective systems in place. Schools and colleges should consider meeting the DfE's Cyber security standards for schools and colleges (DfE, 2023c).

### The 4 key categories of risk

Our approach to online safety is based on addressing the following categories of risk:

**Content** – being exposed to illegal, inappropriate or harmful content, such as pornography, fake news, racism, misogyny/misandry, homophobia, biphobia, self-harm, suicide, anti-Semitism, radicalisation and extremism

**Contact** – being subjected to harmful online interaction with other users, such as child-to-child pressure, commercial advertising and adults posing as children or young adults with the intention to groom or exploit them for sexual, criminal, financial or other purposes

**Conduct** – personal online behaviour that increases the likelihood of, or causes, harm, such as making, sending and receiving explicit images (e.g. consensual and non-consensual sharing of nudes and semi-nudes and/or pornography), sharing other explicit images and online bullying; and

**Commerce** – risks such as online gambling, inappropriate advertising, phishing and/or financial scams

### To meet our aims and address the risks above we will:

Educate pupils about online safety as part of our curriculum. For example:

- The safe use of social media, the internet and technology
- Keeping personal information private
- How to recognise unacceptable behaviour online



- How to report any incidents of cyber-bullying, ensuring pupils are encouraged to do so, including where they are a witness rather than a victim

Train staff, as part of their induction, on safe internet use and online safeguarding issues including cyber-bullying and the risks of online radicalisation. All staff members will receive refresher training at least once each academic year. Staff are also alerted to the additional mitigations that may need to be in place for children with greater vulnerabilities and ensure that they are also effectively safeguarded.

Educate parents/carers about online safety via our website, communications sent directly to them and during parents' evenings. We will also share clear procedures with them so they know how to raise concerns about online safety

Make sure staff are aware of any restrictions placed on them with regards to the use of their mobile phone and cameras, in line with the Guidance for Safe Working Practice, for example that:

- Staff are allowed to bring their personal phones to school for their own use, but will limit such use to non-contact time when pupils are not present
- Staff members' personal phones will remain in their bags or cupboards during contact time with pupils and care must be taken to secure personal devices so that children are unable to access them.
- Staff will not take pictures or recordings of pupils on their personal phones or cameras

Make all pupils, parents/carers, staff, volunteers and governors aware that they are expected to sign an agreement regarding the acceptable use of the internet in school, use of the school's ICT systems and use of their mobile and smart technology

Explain the sanctions we will use if a pupil is in breach of our policies on the acceptable use of the internet and mobile phones

Make sure all staff, pupils and parents/carers are aware that staff have the power to search pupils' phones, as set out in the [DfE's guidance on searching, screening and confiscation](#)

Put in place robust filtering and monitoring systems to limit children's exposure to the 4 key categories of risk (described above) from the school's IT systems

Carry out an annual review of our approach to online safety, supported by an annual risk assessment that considers and reflects the risks faced by our school community

This section summarises our approach to online safety and mobile phone use. For comprehensive details about our school's policy on online safety and the use of mobile phones, please refer to our online 'Esafety policy' and mobile phone policy/guidance documents.

## 9. Notifying parents or carers

Where appropriate, we will discuss any concerns about a child with the child's parents or carers. The DSL will normally do this, or support other relevant staff to do so in the event of a suspicion or disclosure.

Other staff will only talk to parents or carers about any such concerns following consultation with the DSL.

If we believe that notifying the parents or carers would increase the risk to the child, we will discuss this with EHASH and seek their advice before doing so.

In the case of allegations of abuse made against other children, we will normally notify the parents or carers of all the children involved. We will think carefully about what information we provide about the other children involved, and when. We will work with police and/or local authority children's social care to make sure our approach to information sharing is consistent.

The DSL, along with any relevant agencies (this will be decided on a case-by-case basis) will:

- ✓ Meet with the victim's parents or carers, with the victim, to discuss what's being put in place to safeguard them, and understand their wishes in terms of what support they may need and how the report will be progressed

- ✓ Meet with the alleged perpetrator's parents or carers to discuss support for them, and what's being put in place that will impact them, e.g. moving them out of classes with the victim, and the reason(s) behind any decision(s)

## 10. Pupils with special educational needs, disabilities or health issues

We recognise that pupils with special educational needs (SEN) or disabilities or certain health conditions can face additional safeguarding challenges and are statistically more likely to be abused than their peers. Additional barriers can exist when recognising abuse and neglect in this group, including:

Assumptions that indicators of possible abuse such as behaviour, mood and injury relate to the child's condition without further exploration

Pupils being more prone to peer group isolation or bullying (including prejudice-based bullying) than other pupils

The potential for pupils with SEN, disabilities or certain health conditions being disproportionately impacted by behaviours such as bullying, without outwardly showing any signs

Communication barriers and difficulties in managing or reporting these challenges

We offer extra pastoral support for these pupils. This includes: we have a wide range of well trained staff who work with children with SEND and also are also very skilled to work pastorally with those more vulnerable children.

Any concerns about abuse involving pupils with SEND will require close liaison with the DSL (or deputy) and the SENCO.

## 11. Pupils with a social worker

Pupils may need a social worker due to safeguarding or welfare needs. We recognise that a child's experiences of adversity and trauma can leave them vulnerable to further harm as well as potentially creating barriers to attendance, learning, behaviour and mental health.

The DSL and all members of staff will work with and support social workers to help protect vulnerable children.

Where we are aware that a pupil has, or has previously had a social worker, the DSL will always consider this fact to ensure any decisions are made in the best interests of the pupil's safety, welfare and educational outcomes. For example, it will inform decisions about:

Responding to unauthorised absence or missing education where there are known safeguarding risks

Page 10 of the following document outlines our schools responsibility for these children in relation to improving their attendance.

[Summary table of responsibilities for school attendance \(publishing.service.gov.uk\)](https://publishing.service.gov.uk/government/uploads/system/uploads/attachment_data/file/672222/summary-table-of-responsibilities-for-school-attendance.pdf)

The provision of pastoral and/or academic support

School will work with the Rochdale Virtual Headteacher and their team, to reduce disadvantage and champion high aspirations for this cohort of vulnerable children.

## 12. Looked-after and previously looked-after children

We will ensure that staff have the skills, knowledge and understanding to keep looked-after children and previously looked-after children safe. In particular, we will ensure that:

Appropriate staff have relevant information about children's looked after legal status, contact arrangements with birth parents or those with parental responsibility, and care arrangements



The DSL has details of children's social workers and consults with social care and the Rochdale virtual school head, Kirstie Rathbone on 01706925209 in respect of safeguarding concerns for these children

We have appointed a designated teacher, [Mrs Jenny Heyes], who is responsible for promoting the educational achievement of looked-after children and previously looked-after children in line with [statutory guidance](#).

The designated teacher is appropriately trained and has the relevant qualifications and experience to perform the role.

As part of their role, the designated teacher will:

Work closely with the DSL to ensure that any safeguarding concerns regarding looked-after and previously looked-after children are quickly and effectively responded to, with empathy and in line with trauma-informed approaches

Work with the virtual school head, to promote the educational achievement of looked-after and previously looked-after children, including discussing how pupil premium plus funding can be best used to support looked-after children and meet the needs identified in their personal education plans

## **13. Complaints and concerns about school safeguarding policies**

### **13.1 Complaints against staff**

Complaints against staff that are likely to require a child protection investigation will be handled in accordance with our procedures for dealing with allegations of abuse made against staff (see appendix 3).

### **13.2 Other complaints**

As a school we have an open door policy and would like parents / carers to be able to discuss any concerns they have with us directly in the first instance, however, we understand that there may be times where parents believe this may not have effectively resolved the issue. If parents, carers or other individuals wish to raise a complaint with school, they will be directed to do so via the school complaints procedure. The school will deal with all complaints seriously.

In Early Years, we take account of requirements related to complaints set out in the safeguarding and welfare section of the statutory framework for the Early Years Foundation Stage (paragraph 3.75).

### **13.3 Whistle-blowing**

All staff are made aware of their professional duty to raise concerns in relation to safeguarding, which may include the attitudes or actions of colleagues.

We have a whistleblowing procedure, which outlines how anyone who makes a 'protected disclosure' is protected from being treated unfairly or being dismissed. This procedure is shared with all staff in their Induction and reminders are issued on an annual basis as part of safeguarding training.

In Early Years, should also note the requirements set out in paragraph 3.75 of the statutory framework for the Early Years Foundation Stage; you may wish to cover these here if not already covered in a separate policy.

## **14. Record-keeping**

We will hold records in line with our records retention schedule.

All safeguarding concerns, discussions, decisions made and the reasons for those decisions, must be recorded in writing. If you are in any doubt about whether to record something, discuss it with the DSL.

Records will include:

A clear and comprehensive summary of the concern, reflecting the lived experience of the child

Details of how the concern was followed up and resolved

A note of any action taken, decisions reached and the outcome

Concerns and referrals will be kept in a separate child protection file for each child.

Any non-confidential records will be readily accessible and available. Confidential information and records will be held securely and only available to those who have a right or professional need to see them.

Safeguarding records relating to individual children will be retained for a reasonable period of time after they have left the school.

Safeguarding records which contain information about allegations of sexual abuse will be retained for the Independent Inquiry into Child Sexual Abuse (IICSA), for the term of the inquiry.

If a child for whom the school has, or has had, safeguarding concerns moves to another school, the DSL will ensure that their child protection file is forwarded promptly and securely, and separately from the main pupil file.

To allow the new school/college to have support in place when the child arrives, this should be within:

- ✓ **5 days** for an in-year transfer, or within
- ✓ **The first 5 days** of the start of a new term
- ✓

In addition, if the concerns are significant or complex, and/or social services are involved, the DSL will speak to the DSL of the receiving school and provide information to enable them to have time to make any necessary preparations to ensure the safety of the child.

We use CPOMS to record any such incidents. All staff have had training on how to record on CPOMS

We retain records in line with our retention schedule.

CPOMS allows confidential safe delivery of documents to a new school when a pupil moves school.

If required to share records with outside agencies we ensure this is appropriate and do so via secure services eg Egress or will hand deliver paper copies if sensitive information.

In addition:

Appendix 2 sets out our policy on record-keeping specifically with respect to recruitment and pre-appointment checks

Appendix 3 sets out our policy on record-keeping with respect to allegations of abuse made against staff

## 15. Training

### 15.1 All staff

All staff members will undertake safeguarding and child protection training at induction, including on whistle-blowing procedures and online safety, to ensure they understand the school's safeguarding systems and their responsibilities, and can identify signs of possible abuse or neglect.

This training will be regularly updated and will:

Be integrated, aligned and considered as part of the whole-school safeguarding approach and wider staff training, and curriculum planning

Be in line with advice from the 3 safeguarding partners

Have regard to the Teachers' Standards to support the expectation that all teachers:

- Manage behaviour effectively to ensure a good and safe environment
- Have a clear understanding of the needs of all pupils

All staff will have training on the government's anti-radicalisation strategy, Prevent, to enable them to identify children at risk of being drawn into terrorism and to challenge extremist ideas.

Staff will also receive regular safeguarding and child protection updates, including on online safety, as required but at least annually (for example, through emails, e-bulletins and staff meetings).

School will ensure that contractors who are provided through a private finance initiative (PFI) or similar contract will also receive safeguarding training.

Volunteers will receive appropriate training, as applicable.

## **15.2 The DSL and deputies**

The DSL and Deputies are required to attend the RBSCP training titled “Working Together to Safeguard Children” once, to outline the local multi-agency safeguarding procedures in Rochdale.

In addition to this, they must attend advanced and contextual safeguarding training either via the LA Education Safeguarding Officer, RBSCP or another provider eg NSPCC, at least annually.

In addition, they will update their knowledge and skills at regular intervals (for example, through e-bulletins, meeting other DSLs, or taking time to read and digest safeguarding developments).

They will also undertake Prevent awareness training

## **15.3 Governors**

School ensures that all governors receive training about safeguarding and child protection (including online safety) at induction, which is regularly updated. This is to make sure that they:

- ✓ Have the knowledge and information needed to perform their functions and understand their responsibilities, such as providing strategic challenge
- ✓ Can be assured that safeguarding policies and procedures are effective and support the school to deliver a robust whole-school approach to safeguarding

As the chair of governors may be required to act as the ‘case manager’ in the event that an allegation of abuse is made against the headteacher, they receive training in managing allegations for this purpose.

## **15.4 Recruitment – interview panels**

At least one person conducting any interview for any post at the school will have undertaken safer recruitment training. This will cover, as a minimum, the contents of Keeping Children Safe in Education, and will be in line with local safeguarding procedures.

See appendix 2 of this policy for more information about our safer recruitment procedures.

As an Early years provider:

## **15.5 Staff who have contact with pupils and families**

All staff who have contact with children and families will have supervisions which will provide them with support, coaching and training, promote the interests of children and allow for confidential discussions of sensitive issues.

## **16 Partnership with Parents**

The school shares a purpose with parents to educate, keep children safe from harm and have their welfare promoted.

We are committed to working with parents positively, openly and honestly. We ensure that all parents are treated with respect, dignity and courtesy. We respect parents’ rights to privacy and confidentiality and will not share sensitive information until we have permission or it is necessary to do so to protect a child.

St. Mary’s will share with parents any concerns we may have about their child unless to do so may place a child at risk of harm.

We encourage parents to discuss any concerns they may have with us and we make parents aware of our Safeguarding and Child Protection Policies and parents are aware that they can view these policies on request. They are also available on the school website.

## 17 Health and Safety Policy

The school has a Health and Safety Policy, which is monitored each year by the Governing Body.

The Headteacher, the Business Manager, the Caretaker and a Governor with responsibility for Health and Safety oversees the policy and its implementation. Any H/S concerns from staff, volunteers, Governors or pupils, or near misses, are reported to any of the above and the Caretaker carries out an initial examination, assessing what remedial action needs to take place.

Each term there is a fire drill that practices efficient evacuation from the buildings. The school conducts an annual fire risk assessment as well as an emergency evacuation procedure from outside to inside.

There is an 'Emergency Plan' (Critical Incidents Plan) that details what staff and parents should do in the case of emergencies.

We are a Healthy School and actively promote having a healthy body and mind – this include being proactive in recognising and supporting children with mental health issues.

## 18 Site Security

St Mary's aims to provide a secure school site but recognises that the site is only as secure as the people who use it. Therefore, all people on the site have to adhere to the rules which govern it. It is recognised that laxity can cause potential problems to safeguarding. Therefore, the school ensures that:

- gates are locked except at the start and end of each day
- doors are kept closed to prevent intrusion – external doors **MUST** be closed during the day, especially those in view of the main roads
- wherever possible visitors and volunteers only enter through the main entrance and must sign in at the office
- children are only allowed home with adults/carers with parental responsibility or when confirmed permission has been received in advance – we recommend Year 6 as a suitable time for children to come/go home without parents
- shutters are installed on all windows and doors
- children are not allowed to leave school alone during school working hours and if collected by an adult, signed out
- should a child leave the school premises without permission then staff should report immediately to SLT.

Parents and Police will then be immediately informed of the circumstances.

## 19 Meeting the Needs of Pupils with Medical Conditions

St Mary's is fully committed to all aspects of Health and Safety and ensures that a high proportion of staff have First Aid at Work/Paediatric qualifications and all staff have basic first aid training to ensure that all children are well cared for. Care Plans are put in place for children with more specific medical needs. See also Health and Safety Policy. Also Medicines Policy and First Aid Policy and Asthma Policy.

It is **all staffs** responsibility to protect **ALL** children. If a different member of staff is covering a different class, information **MUST** be shared. Eg School FPTA fairs, enterprise days, Coffee mornings - allergy information etc must be shared for everyone to see.

## 20 The Design of the Curriculum

The curriculum deals with Safeguarding in two ways. Firstly, in subjects such as RSHE and RE, relevant discussions around related issues take place with the children. Topics include such themes as Drugs, Alcohol, Sex and Relationships, Stranger Danger, E-Safety issues and Bullying. Children are encouraged to explore and discuss these issues at an age appropriate level. Childline work with our older children to ensure they fully understand forms of abuse and what they should do in such cases.

Secondly, the curriculum is designed so that safety issues within the subject are discussed and safe practices explained, such as using equipment properly in PE and Design and Technology. Appropriate staffing levels will be maintained at all times when the curriculum is being delivered outside of the school site. Appropriate

and agreed pupil/adult ratios are always maintained. The lead adult always risk assesses visits and trips to ensure children are safeguarded and protected from harm before the event is authorised by the EVC then finally by the Headteacher.

Visiting speakers, with correct clearance and/or constant supervision are always welcome in school so that they can give specialist knowledge to the children.

We also constantly adapt the curriculum to meet the ever changing world and events which may arise which children need educating on to safeguard them.

All staff are trained as Educational Visits Leaders and follow our school policy to ensure off -site learning is fun, meaningful but safe. See Educational Visits Policy.

All staff are regularly briefed and updated about currents trends and issues which may affect children nationally and also local issues and are taught to be vigilant about Safeguarding issues such as Female Genital Mutilation (FGM), Child Grooming and forced marriage as some examples. Children are taught within the curriculum at the appropriate level how to be pro-active and protect themselves beyond school from harm/to report any concerns or worries to any adults.

### **St. Mary's School has 'Healthy School' status and this is renewed every year.**

We believe that a healthy school is one in which children can thrive not only physically and academically, but also spiritually and emotionally. We promote a whole-school approach to the well-being of our children, which involves:

- giving health issues high priority in our planning
- making sure that we have effective policies on sex education and drugs education
- planning the curriculum to ensure that the children have sufficient opportunity to learn
- about healthy living
- providing opportunities for children to take responsibility for their learning and behaviour
- making sure that the environment is stimulating and conducive to learning
- providing opportunities for children to put forward their views and be listened to
- supporting children who need additional care and attention
- providing opportunities for all our staff to develop their skills
- working closely with parents/carers and external agencies to provide the best possible
- support for our children
- making sure all children have clear and appropriate targets

Teachers should consider themselves a role model and ensure they lead and promote a healthy lifestyle, especially in front of the children.

### **21 School meals**

Our school provides the opportunity for children to have a meal at lunchtimes. Some parents or carers in receipt of Income Support, a Job Seeker's Allowance, Support under the Immigration and Asylum Act of 1999, or Child Tax Credit (with income below a certain limit), may be able to claim free school meals for their children. As of September 2014, all Infant Children are entitled to a free school meal. We do all we can to ensure that the meals provided have a suitable nutritional value, in line with the requirements of the School Standards and Framework Act of 1998. Children in Foundation Stage and Key Stage one are provided with free milk and fruit every day and Key Stage 2 children can choose milk (this is provided free for FSM pupils). If children choose to bring their own packed lunch, we provide them with a suitable place to eat it, and we supervise them during this time.

Our school promotes a healthy lifestyle. We do not allow children to bring sweets into school to be eaten during the school day. We now follow the new Food Standards (Jan 2015).

### **22 School uniform**

It is our policy that all children wear the school uniform when attending school, or when participating in a school-organised event, even if outside normal school hours. We agree the requirements for school uniform with parents and carers, and we review these requirements regularly.

We always take a sensitive approach where regulations regarding uniform conflict with a child's religious or cultural beliefs. We have drawn up regulations regarding the recognition of cultural diversity in this respect, and these stipulate that we do not discriminate on grounds of race, creed or gender.

It is the responsibility of the Headteacher to ensure that the school uniform policy is enforced. It is, however, not our school policy to exclude children from the school if they, for whatever reason, do not have the proper school uniform.

We ask parents and carers to equip their children with the necessary uniform and school equipment. If a child repeatedly attends school without the correct uniform, we will inform parents and carers and request that they make sure their child leaves home with the proper uniform on. If a parent is in financial difficulties, and this results in a child not having the correct uniform, or not having adequate equipment, our school will do all it can to support the parent, including financially. We ensure staff are sensitive when speaking to children who are not wearing correct uniform. We ask parents and carers not to send their child to school with 'extreme' hairstyles, or the sort of appearance that is likely to draw attention. We ask parents and carers to discuss their child's appearance with us if there are any religious issues involved that we might be unaware of.

On grounds of health and safety, we do not allow children to wear jewellery in our school except for watches and small plain studs which must be covered during PE.

### **23 Inclusion Opportunities**

At St. Mary's we welcome all children. Where a child has a recognised disability we will make all reasonable adjustments to accommodate their needs in school. This will include the availability of resources and accessibility of the school building and site. We will make every effort to ensure that children with special educational needs and disabilities maintain their entitlement when they enter the school. See Single Equality Plan.

### **24 Behaviour Policy**

Good behaviour is essential in any community and at St Mary's we have high expectations in this area. The school has a Behaviour Policy and a Code of Behaviour that must be adhered to by all children. This is shared with parents and is available on the school website and from the school office.

Although the emphasis is always on the positive, there are also times when children have to be disciplined in order to maintain the safety and security of all children.

### **25 Bullying**

St Mary's adopts a zero tolerance to any form of bullying and ensures that there is a very proactive stance against bullying. All children are regularly taught and reminded as to what bullying is and there are several ways to ensure all children can report any form of bullying. We are very proactive in our stance against bullying to prevent it within our school. See Anti Bullying Policy for further detail.

### **26 Equality, Discrimination, Racial and Homophobic Tolerance**

St Mary's school is proud of our Catholic ethos and as such we only accept equality and tolerance of each other and we celebrate that we are all different but equal and loved equally by God. As a school, through education, challenge and discussion, we aim to prevent any such racist or homophobic incidents.

Such issues are discussed in both the RE and in the PSHE curricula. The children will take part in discussions designed to raise awareness and address prejudices. This work ensures that tolerance is at the forefront of everything we do. See our Single Equalities policy and Accessibility plan

### **27 Safety of Visitors to the School**

We always aim to make parents, friends and any visitors very welcome. However, we will always put the safety of the children first and may refuse a visitor access if we have any concerns about the welfare of our children. We provide an information sheet for visitors which makes it clear that we will do everything we can to support anyone with any specific needs but it is their duty to tell us, especially if their health or safety would be compromised in the event of a fire or emergency in school. See section below on checks we make on visitors to check their identity and assess their suitability to have unsupervised visits with our children.

### **28 Checking the identity and suitability of visitors**

All visitors will be required to verify their identity to the satisfaction of staff and to leave their belongings, including their mobile phone(s), in a safe place during their visit.

If the visitor is unknown to the setting, we will check their credentials and reason for visiting before allowing them to enter the setting. Visitors should be ready to produce identification.

Visitors are expected to sign in using the visitors' record and wear a visitor's badge.

Visitors to the school who are visiting for a professional purpose, such as educational psychologists and school improvement officers, will be asked to show photo ID and:

- ✓ Will be asked to show their DBS certificate, which will be checked alongside their photo ID; or
- ✓ The organisation sending the professional, such as the LA, will provide prior written confirmation that an appropriate level of DBS check has been carried out in which case, school will not request sight of their DBS.

All other visitors, including visiting speakers, will be accompanied by a member of staff at all times. We will not invite into the school any speaker who is known to disseminate extremist views, and will carry out appropriate checks to ensure that any individual or organisation using school facilities is not seeking to disseminate extremist views or radicalise pupils or staff.

School staff are trained that they should politely challenge any unaccompanied adults who they encounter inside the school building/ grounds, to ascertain the reason for their visit and if appropriate, accompany them.

See our Visitor policy and leaflet provided to every visitor to read.

## **29 Non-collection of children**

If a child is not collected at the end of the session/day, we will:

Contact parent/carer or whoever we believe was supposed to collect them that day.

If no response, we will leave a message then contact any other provided contacts in order of stated preferences by the parents.

If no response, we will keep the child safe either in class with the teacher or at the office with a member of staff until the designated person arrives.

We will continue to try to make contact until someone comes for the child. Usually this is down to a genuine misunderstanding and as a one off, we accept this can happen at times.

In some case the Headteacher may approve for a member of staff to drop the child at home, with the consent of the parent. The Headteacher will ensure the parents appreciate that this is unfair on staff and most importantly the child.

In repeated cases we will log the details and speak to the parents to ascertain if there are any other potential safeguarding issues. If so, we will support the family as much as possible and help them to put a plan in place.

If this continues to be an issue or the child is already vulnerable with other safeguarding concerns, we may refer to Early Help or our Family Worker. We may need to report the family to Social Care as this may be deemed as a neglect issue or in extreme circumstances, we may report to the police.

We may also advise that the parents should register with one of our After School Club providers and we can refer the child to here if the issue is persistent and the family must pay for the service.

## **30 Staff**

Whilst our staff always ensure that all the children are well cared for, we also have a duty of care to the adults in our school. As a result, no verbal or physical abuse will be tolerated to any member of St Mary's staff or visitors to our school. The Governing Body adopts a 'Zero Tolerance Policy' in the support of its staff.

## **Policy review**

This policy will be reviewed at least **annually** (more so if any amendments made) by the DSL and deputies and the Governing Board Curriculum Committee. At every review, it will be approved by the full governing board.

### **Outcome**

Every child should feel that school is a happy place where they are valued, respected and always listened to and supported with any difficulties they may have – they should be able to trust any adult to help them. The school will do everything possible to ensure it provides a safe, secure and welcoming environment in which every child can work, learn and play, whilst being treated with dignity. We aim to develop the 'Whole Child' so that they can become well balanced adults who are equipped for their future. We will always act swiftly and in the Child's best interest whenever we have any concerns.

**Date: new policy - September 2024**

**Signed:           Chair of Governors**

**Next review:** Sep 2025 or earlier if needed

## **Links with other policies**

This policy links to the following policies and procedures:

Behaviour

Staff code of conduct (Guidance for safe working practice)

Whistleblowing

Complaints

Health and safety

Attendance

Online safety

Mobile phone use

Equality

Relationships and sex education

First aid

Curriculum

Designated teacher for looked-after and previously looked-after children

Privacy notices



## Appendices

**These appendices are based on the Department for Education's statutory guidance, Keeping Children Safe in Education.**

### Appendix 1: types of abuse

**Abuse**, including neglect, and safeguarding issues are rarely standalone events that can be covered by one definition or label. In most cases, multiple issues will overlap.

**Physical abuse** may involve hitting, shaking, throwing, poisoning, burning or scalding, drowning, suffocating or otherwise causing physical harm to a child. Physical harm may also be caused when a parent or carer fabricates the symptoms of, or deliberately induces, illness in a child.

**Emotional abuse** is the persistent emotional maltreatment of a child such as to cause severe and adverse effects on the child's emotional development. Some level of emotional abuse is involved in all types of maltreatment of a child, although it may occur alone.

Emotional abuse may involve:

Conveying to a child that they are worthless or unloved, inadequate, or valued only insofar as they meet the needs of another person

Not giving the child opportunities to express their views, deliberately silencing them or 'making fun' of what they say or how they communicate

Age or developmentally inappropriate expectations being imposed on children. These may include interactions that are beyond a child's developmental capability, as well as overprotection and limitation of exploration and learning, or preventing the child participating in normal social interaction

Seeing or hearing the ill-treatment of another

Serious bullying (including cyber-bullying), causing children frequently to feel frightened or in danger, or the exploitation or corruption of children

**Sexual abuse** involves forcing or enticing a child or young person to take part in sexual activities, not necessarily involving a high level of violence, whether or not the child is aware of what is happening. The activities may involve:

Physical contact, including assault by penetration (for example rape or oral sex) or non-penetrative acts such as masturbation, kissing, rubbing and touching outside of clothing

Non-contact activities, such as involving children in looking at, or in the production of, sexual images, watching sexual activities, encouraging children to behave in sexually inappropriate ways, or grooming a child in preparation for abuse (including via the internet)

Sexual abuse is not solely perpetrated by adult males. Women can also commit acts of sexual abuse, as can other children.

**Neglect** is the persistent failure to meet a child's basic physical and/or psychological needs, likely to result in the serious impairment of the child's health or development. Neglect may occur during pregnancy as a result of maternal substance abuse.

Once a child is born, neglect may involve a parent or carer failing to:

Provide adequate food, clothing and shelter (including exclusion from home or abandonment)

Protect a child from physical and emotional harm or danger

Ensure adequate supervision (including the use of inadequate care-givers)

Ensure access to appropriate medical care or treatment

It may also include neglect of, or unresponsiveness to, a child's basic emotional needs.

## **Appendix 2: safer recruitment and DBS checks – policy and procedures**

### **Recruitment and selection process**

To make sure we recruit suitable people, we will ensure that those involved in the recruitment and employment of staff to work with children have received appropriate safer recruitment training.

We have put the following steps in place during our recruitment and selection process to ensure we are committed to safeguarding and promoting the welfare of children.

#### **Advertising**

When advertising roles, we will make clear:

Our school's commitment to safeguarding and promoting the welfare of children

That safeguarding checks will be undertaken

The safeguarding requirements and responsibilities of the role, such as the extent to which the role will involve contact with children

Whether or not the role is exempt from the Rehabilitation of Offenders Act 1974 and the amendments to the Exceptions Order 1975, 2013 and 2020. If the role is exempt, certain spent convictions and cautions are 'protected', so they do not need to be disclosed, and if they are disclosed, we cannot take them into account

#### **Application forms**

Our application forms will:

Include a statement saying that it is an offence to apply for the role if an applicant is barred from engaging in regulated activity relevant to children (where the role involves this type of regulated activity)

Include a copy of, or link to, our child protection and safeguarding policy and our policy on the employment of ex-offenders

#### **Shortlisting**

Our shortlisting process will involve at least 2 people and will:

Consider any inconsistencies and look for gaps in employment and reasons given for them

Explore all potential concerns

Once we have shortlisted candidates, we will ask shortlisted candidates to:

Complete a self-declaration of their criminal record or any information that would make them unsuitable to work with children, so that they have the opportunity to share relevant information and discuss it at interview stage. The information we will ask for includes:

- If they have a criminal history
- Whether they are included on the barred list
- Whether they are prohibited from teaching
- Information about any criminal offences committed in any country in line with the law as applicable in England and Wales
- Any relevant overseas information

Sign a declaration confirming the information they have provided is true

We will also consider carrying out an online search on shortlisted candidates to help identify any incidents or issues that are publicly available online, in line with advice from HR and with prior knowledge of the candidate.

## **Seeking references and checking employment history**

We will obtain references before interview. Any concerns raised will be explored further with referees and taken up with the candidate at interview.

When seeking references we will:

Not accept open references

Liaise directly with referees and verify any information contained within references with the referees

Ensure any references are from the candidate's current employer and completed by a senior person. Where the referee is school based, we will ask for the reference to be confirmed by the headteacher/principal as accurate in respect to disciplinary investigations

Obtain verification of the candidate's most recent relevant period of employment if they are not currently employed

Secure a reference from the relevant employer from the last time the candidate worked with children if they are not currently working with children

Compare the information on the application form with that in the reference and take up any inconsistencies with the candidate

Resolve any concerns before any appointment is confirmed

## **Interview and selection**

When interviewing candidates, we will:

Probe any gaps in employment, or where the candidate has changed employment or location frequently, and ask candidates to explain this

Explore any potential areas of concern to determine the candidate's suitability to work with children

Record all information considered and decisions made

## **Pre-appointment vetting checks**

We will record all information on the checks carried out in the school's single central record (SCR). Copies of these checks, where appropriate, will be held in individuals' personnel files. These records are stored confidentially and access is granted on a need to know basis.

We follow requirements and best practice in retaining copies of these checks, as set out below.

### **New staff**

All offers of appointment will be conditional until satisfactory completion of the necessary pre-employment checks. When appointing new staff, we will:

Verify their identity, including sight of birth certificates and any name change documentation

Obtain (via the applicant) an enhanced DBS certificate, including barred list information for those who will be engaging in regulated activity (see definition below). We will obtain the certificate before, or as soon as practicable after, appointment, including when using the DBS update service. We will not keep a copy of the certificate for longer than 6 months, but when the copy is destroyed we may still keep a record of the fact that vetting took place, the result of the check and recruitment decision taken

Obtain a separate barred list check if they will start work in regulated activity before the DBS certificate is available

Verify their mental and physical fitness to carry out their work responsibilities

Verify their right to work in the UK. We will keep a copy of this verification for the duration of the member of staff's employment and for 2 years afterwards

Verify their professional qualifications, as appropriate

Ensure they are not subject to a prohibition order if they are employed to be a teacher

Carry out further additional checks, as appropriate, on candidates who have lived or worked outside of the UK. Where available, these will include:

- For all staff, including teaching positions: [criminal records checks for overseas applicants](#)
- For teaching positions: obtaining a letter from the professional regulating authority in the country where the applicant has worked, confirming that they have not imposed any sanctions or restrictions on that person, and/or are aware of any reason why that person may be unsuitable to teach

Check that candidates taking up a management position\* are not subject to a prohibition from management (section 128) direction made by the secretary of state

\* Management positions are most likely to include, but are not limited to, headteachers, principals and deputy/assistant headteachers.

For those working with children under age 8, we will ensure that appropriate checks are carried out to ensure that individuals are not disqualified under the 2018 Childcare Disqualification Regulations and Childcare Act 2006. Where we take a decision that an individual falls outside of the scope of these regulations and we do not carry out such checks, we will retain a record of our assessment on the individual's personnel file. This will include our evaluation of any risks and control measures put in place, and any advice sought.

**Regulated activity** means a person who will be:

Responsible, on a regular basis (3 times or more in a month) in a school or college, for teaching, training, instructing, caring for or supervising children; or

Carrying out paid, or unsupervised unpaid, work regularly in a school or college where that work provides an opportunity for contact with children; or

Engaging in intimate or personal care or overnight activity, even if this happens only once and regardless of whether they are supervised or not

### **Existing staff**

In certain circumstances we will carry out all the relevant checks on existing staff as if the individual was a new member of staff. These circumstances are when:

There are concerns about an existing member of staff's suitability to work with children; or

An individual moves from a post that is not regulated activity to one that is; or

There has been a break in service of 12 weeks or more

If we have concerns about an existing member of staff's suitability to work with children, we will seek advice from our HR service and/or the LADO. We will refer to the DBS anyone who has harmed, or poses a risk of harm, to a child or vulnerable adult where:

We believe the individual has engaged in [relevant conduct](#); or

We believe the individual has received a caution or conviction for a relevant (automatic barring either with or without the right to make representations) offence, under the [Safeguarding Vulnerable Groups Act 2006 \(Prescribed Criteria and Miscellaneous Provisions\) Regulations 2009](#); or

We believe the 'harm test' is satisfied in respect of the individual (i.e. they may harm a child or vulnerable adult or put them at risk of harm); and

The individual has been removed from working in regulated activity (paid or unpaid) or would have been removed if they had not left

### **Agency and third-party staff**

We will obtain written notification from any agency or third-party organisation that it has carried out the necessary safer recruitment checks that we would otherwise perform. We will also check that the person presenting themselves for work is the same person on whom the checks have been made.

### **Contractors**

We will ensure that any contractor, or any employee of the contractor, who is to work at the school has had the appropriate level of DBS check (this includes contractors who are provided through a PFI or similar contract). This will be:

An enhanced DBS check with barred list information for contractors engaging in regulated activity

An enhanced DBS check, not including barred list information, for all other contractors who are not in regulated activity but whose work provides them with an opportunity for regular contact with children

We will obtain the DBS check for self-employed contractors.

We will not keep copies of such checks for longer than 6 months. Or until such time as the contact ends.

Contractors who have not had any checks will not be allowed to work unsupervised or engage in regulated activity under any circumstances.

We will check the identity of all contractors and their staff on arrival at the school.

For those working with children under age 8: For self-employed contractors such as music teachers or sports coaches, we will ensure that appropriate checks are carried out to ensure that individuals are not disqualified under the 2018 Childcare Disqualification Regulations and Childcare Act 2006. Where we decide that an individual falls outside of the scope of these regulations and we do not carry out such checks, we will retain a record of our assessment. This will include our evaluation of any risks and control measures put in place, and any advice sought.

### **Trainee/student teachers**

Where applicants for initial teacher training are salaried by us, we will ensure that all necessary checks are carried out.

Where trainee teachers are fee-funded, we will obtain written confirmation from the training provider that necessary checks have been carried out and that the trainee has been judged by the provider to be suitable to work with children.

For those working with pupils aged under 8: In both cases, this includes checks to ensure that individuals are not disqualified under the 2018 Childcare Disqualification Regulations and Childcare Act 2006.

### **Volunteers**

We will:

Never leave an unchecked volunteer unsupervised or allow them to work in regulated activity

Obtain an enhanced DBS check with barred list information for all volunteers working in regulated activity

Carry out a risk assessment when deciding whether to seek an enhanced DBS check without barred list information for any volunteers not engaging in regulated activity. We will seek HR advice and retain a record of this risk assessment

For those working with pupils aged under 8:

Ensure that appropriate checks are carried out to ensure that individuals are not disqualified under the 2018 Childcare Disqualification Regulations and Childcare Act 2006. Where we decide that an individual falls outside of the scope of these regulations and we do not carry out such checks, we will retain a record of our assessment. This will include our evaluation of any risks and control measures put in place, and any advice sought

### **Governors**

All governors will have an enhanced DBS check without barred list information.

They will have an enhanced DBS check with barred list information if working in regulated activity.

All governors will also have a section 128 check (as a section 128 direction disqualifies an individual from being a maintained school governor).

All proprietors, trustees, local governors and members will also have the following checks:

A section 128 check (to check prohibition on participation in management under [section 128 of the Education and Skills Act 2008](#)). [Section 128 checks are only required for local governors if they have retained or been delegated any management responsibilities.]

Identity – photographic ID / birth certification

Right to work in the UK

Other checks deemed necessary if they have lived or worked outside the UK

The chair of the board will have their DBS check countersigned by the secretary of state.

All governors will also have the following checks:

Identity – photographic ID / birth certification

Right to work in the UK

Other checks deemed necessary if they have lived or worked outside the UK

### **Staff working in alternative provision settings**

Where we place a pupil with an alternative provision provider, we obtain written confirmation from the provider that they have carried out the appropriate safeguarding checks on individuals working there that we would otherwise perform, in line with the Rochdale alternative provision guidance for schools.

### **Adults who supervise pupils on work experience**

When organising work experience, we will ensure that policies and procedures are in place to protect children from harm.

We will also consider whether it is necessary for barred list checks to be carried out on the individuals who supervise a pupil under 16 on work experience. This will depend on the specific circumstances of the work experience, including the nature of the supervision, the frequency of the activity being supervised, and whether the work is regulated activity.

### **Pupils staying with host families**

Where the school makes arrangements for pupils to be provided with care and accommodation by a host family to which they are not related (for example, during a foreign exchange visit), we will request enhanced DBS checks with barred list information on those people.

Where the school is organising such hosting arrangements overseas and host families cannot be checked in the same way, we will work with our partner schools abroad to ensure that similar assurances are undertaken prior to the visit.

## Appendix 3: allegations of abuse made against staff

### Section 1: allegations that may meet the harms threshold

This section applies to all cases in which it is alleged that a current member of staff, including a supply teacher, volunteer or contractor, has:

Behaved in a way that has harmed a child, or may have harmed a child, and/or

Possibly committed a criminal offence against or related to a child, and/or

Behaved towards a child or children in a way that indicates he or she may pose a risk of harm to children, and/or

Behaved or may have behaved in a way that indicates they may not be suitable to work with children – this includes behaviour taking place both inside and outside of school

If we're in any doubt as to whether a concern meets the harm threshold, we will consult our local authority designated officer (LADO). LADO@Rochdale.gov.uk

We will deal with any allegation of abuse quickly, in a fair and consistent way that provides effective child protection while also supporting the individual who is the subject of the allegation.

A 'case manager' will lead any investigation. This will be the headteacher, or the chair of governors where the headteacher is the subject of the allegation. The case manager will be identified at the earliest opportunity.

Our procedures for dealing with allegations will be applied with common sense and judgement.

### Suspension until the case is resolved

Suspension will not be the default position, and will only be considered in cases where there is reason to suspect that a child or other children is/are at risk of harm, or the case is so serious that there might be grounds for dismissal. In such cases, we will only suspend an individual if we have considered all other options available, obtained HR advice and concluded there is no reasonable alternative.

Based on an assessment of risk, we will consider alternatives such as:

Redeployment within the school so that the individual does not have direct contact with the child or children concerned

Providing a colleague to be present when the individual has contact with children

Redeploying the individual to alternative work in the school so that they do not have unsupervised access to children

Moving the child or children to classes where they will not come into contact with the individual, making it clear that this is not a punishment and parents/carers have been consulted

Temporarily redeploying the individual to another role in a different location

The case manager will seek advice from the school's HR support and the LADO as well as the police and children's social care where they have been involved.

### Definitions for outcomes of allegation investigations

**Substantiated:** there is sufficient evidence to prove the allegation

**Malicious:** there is sufficient evidence to disprove the allegation and there has been a deliberate act to deceive, or to cause harm to the subject of the allegation

**False:** there is sufficient evidence to disprove the allegation

**Unsubstantiated:** there is insufficient evidence to either prove or disprove the allegation (this does not imply guilt or innocence)

**Unfounded:** to reflect cases where there is no evidence or proper basis which supports the allegation being made



## Procedure for dealing with allegations

In the event of an allegation that meets the criteria above, the case manager will take the following steps:

Conduct basic fact finding in line with local procedures to obtain key information about the allegation before carrying on with the steps below

Discuss the allegation with the LADO. This is to consider the nature, content and context of the allegation and agree a course of action, including whether further enquiries are necessary to enable a decision on how to proceed, and whether it is necessary to involve the police and/or children's social care services. (The case manager may, on occasion, consider it necessary to involve the police *before* consulting the LADO – for example, if the accused individual is deemed to be an immediate risk to children or there is evidence of a possible criminal offence. In such cases, the case manager will notify the LADO as soon as practicably possible after contacting the police)

Inform the individual of the concerns or allegations and likely course of action as soon as possible after speaking to the LADO (and the police or children's social care services, where necessary). Where the police and/or children's social care services are involved, the case manager will only share such information with the individual as has been agreed with those agencies

Where appropriate (in the circumstances described above), after taking HR advice, carefully consider whether suspension of the individual from contact with children at the school is justified or whether alternative arrangements such as those outlined above can be put in place. In addition to discussion with HR, advice will be also sought from the LADO, police and/or children's social care services, as appropriate

Where the case manager is concerned about the welfare of other children in the community or the individual's family, they will discuss these concerns with the DSL and make a risk assessment of the situation. If necessary, the DSL may make a referral to children's social care

**If suspension is considered necessary**, agree and record the rationale for this with the LADO and HR. The record will include information about the alternatives to suspension that have been considered, and why they were rejected. Written confirmation of the suspension will be provided to the individual facing the allegation or concern and the individual will be given a named support officer at the school and their contact details

**If it is decided that no further action is to be taken** in regard to the subject of the allegation or concern, record this decision and the justification for it and agree with the LADO and HR what information should be put in writing to the individual and by whom, as well as what action should follow both in respect of the individual and those who made the initial allegation

**If it is decided that further action is needed**, take steps as agreed with the LADO and HR to initiate the appropriate action in school and/or liaise with the police and/or children's social care services as appropriate

Provide effective support for the individual facing the allegation or concern, including appointing a named representative to keep them informed of the progress of the case and considering what other support is appropriate. Advice should be taken from HR in respect of whether referral to Occupational Health or other support services may be beneficial.

Inform the parents or carers of the child/children involved about the allegation as soon as possible if they do not already know (following agreement with children's social care services and/or the police, if applicable). The case manager will also inform the parents or carers of the requirement to maintain confidentiality about any allegations made against teachers (where this applies) while investigations are ongoing.

Keep the parents or carers of the child/children involved informed of the progress of the case (only in relation to their child – no information will be shared regarding the staff member)

Make a referral to the DBS where it is thought that the individual facing the allegation or concern has engaged in conduct that harmed or is likely to harm a child, or if the individual otherwise poses a risk of harm to a child. The HR service should support school with this requirement.

As an Early years provider, we will inform Ofsted of any allegations of serious harm or abuse by any person living, working, or looking after children at the premises (whether the allegations relate to harm or abuse committed on the premises or elsewhere), and any action taken in respect of the allegations. This notification will be made as soon as reasonably possible and always within 14 days of the allegations being made.



If the school is made aware that the secretary of state has made an interim prohibition order in respect of an individual, we will immediately suspend that individual from teaching after seeking HR advice, pending the findings of the investigation by the Teaching Regulation Agency.

Where the police are involved, wherever possible the school will ask the police at the start of the investigation to obtain consent from the individuals involved to share their statements and evidence for use in the school's disciplinary process, should this be required at a later point.

### **Additional considerations for supply teachers and all contracted staff**

If there are concerns or an allegation is made against someone not directly employed by the school, such as a supply teacher or contracted staff member provided by an agency, we will take the actions below in addition to our standard procedures.

We will not decide to stop using an individual due to safeguarding concerns without finding out the facts and liaising with our LADO and HR team to determine a suitable outcome

The governing board will discuss with the agency whether it is appropriate to suspend the individual, or redeploy them to another part of the school, while the school carries out the investigation

We will involve the agency fully, but the school will take the lead in collecting the necessary information and providing it to the LADO as required

We will address issues such as information sharing, to ensure any previous concerns or allegations known to the agency are taken into account (we will do this, for example, as part of the allegations management meeting or by liaising directly with the agency where necessary)

When using an agency, we will inform them of our process for managing allegations, and keep them updated about our policies as necessary, and will invite the agency's HR manager or equivalent to meetings as appropriate.

### **Organisations or Individuals using school premises**

Incidents occurring when an individual or organisation uses a school's premises. As with all safeguarding allegations, schools should follow their safeguarding policies and procedures, including informing the Local Authority Designated Officer (LADO)

## **Timescales**

In all cases, we will seek to conclude any allegations management cases as soon as is practicable. If disciplinary action is required, the timescales for proceedings will be in line with school policy.

## **Specific actions**

### **Action following a criminal investigation or prosecution**

The case manager will discuss with the LADO and HR whether any further action, including disciplinary action, is appropriate and, if so, how to proceed, taking into account information provided by the police and/or children's social care services.

### **Conclusion of a case where the allegation is substantiated**

If the allegation is substantiated and the individual is dismissed or the school ceases to use their services, or the individual resigns or otherwise ceases to provide their services, the case manager and their HR representative will discuss with the LADO whether to make a referral to the DBS for consideration of whether inclusion on the barred lists is required. If they think that the individual has engaged in conduct that has harmed (or is likely to harm) a child, or if they think the person otherwise poses a risk of harm to a child, they must make a referral to the DBS.

If the individual concerned is a member of teaching staff, the case manager and HR representative will discuss with the LADO whether to refer the matter to the Teaching Regulation Agency to consider prohibiting the individual from teaching.

### **Individuals returning to work after suspension**

If it is decided that an individual who has been suspended can return to work, the case manager will consider how best to facilitate this and will take advice from HR in respect of reintegration into school.

The case manager will also consider how best to manage the individual's contact with the child or children who made the allegation, if they are still attending the school.

### **Unsubstantiated, unfounded, false or malicious allegations**

If an allegation is:

Determined to be unsubstantiated, unfounded, false or malicious, the LADO and case manager will consider the appropriate next steps. If they consider that the child and/or person who made the allegation is in need of help, or the allegation may have been a cry for help, a referral to children's social care may be appropriate

Shown to be deliberately invented, or malicious, the school will consider whether any disciplinary action is appropriate against the individual(s) who made it

## **Confidentiality and information sharing**

The school will make every effort to maintain confidentiality and guard against unwanted publicity while an allegation is being investigated or considered.

The case manager will take advice from the LADO, HR team, police and children's social care services, as appropriate, to agree:

- Who needs to know about the allegation and what information can be shared
- How to manage speculation, leaks and gossip, including how to make parents or carers of a child/children involved aware of their obligations with respect to confidentiality
- What, if any, information can be reasonably given to the wider community to reduce speculation
- How to manage press interest if, and when, it arises

## **Record-keeping**

The case manager will maintain clear records about any case where the allegation or concern meets the criteria above and store them on the individual's confidential personnel file for the duration of the case.

The records of any allegation that, following an investigation, is found to be malicious or false will be deleted from the individual's personnel file (unless the individual consents for the records to be retained on the file).

For all other allegations (which are not found to be malicious or false), the following information will be kept on the file of the individual concerned:

- A clear and comprehensive summary of the allegation
- Details of how the allegation was followed up and resolved
- Notes of any action taken, decisions reached and the outcome
- A declaration on whether the information will be referred to in any future reference

In these cases, the school will provide a copy to the individual, in agreement with children's social care or the police as appropriate.

Where records contain information about allegations of sexual abuse, we will preserve these for the Independent Inquiry into Child Sexual Abuse (IICSA), for the term of the inquiry. We will retain all other records at least until the individual has reached normal pension age, or for 10 years from the date of the allegation if that is longer.

## **References**

When providing employer references, we will:

Not refer to any allegation that has been found to be false, unfounded, unsubstantiated or malicious, or any repeated allegations which have all been found to be false, unfounded, unsubstantiated or malicious

Include substantiated allegations, provided that the information is factual and does not include opinions  
Seek HR advice if unsure what should be disclosed in a reference.

## **Learning lessons**

After any cases where the allegations are *substantiated*, we will review the circumstances of the case with the LADO and HR to determine whether there are any improvements that we can make to the school's procedures or practice to help prevent similar events in the future.

## **Non-recent allegations**

Abuse can be reported, no matter how long ago it happened.

We will report any non-recent allegations made by a child to the LADO in line with our local authority's procedures for dealing with non-recent allegations.

Where an adult makes an allegation to the school that they were abused as a child, we will advise the individual to report the allegation to the police.

## **Section 2: concerns that do not meet the harm threshold**

This section applies to all concerns (including allegations) about members of staff, including supply teachers, volunteers and contractors, which do not meet the harm threshold set out in section 1 above.

Concerns may arise through, for example:

Suspicion

Complaint

Safeguarding concern or allegation from another member of staff

Disclosure made by a child, parent or other adult within or outside the school

Pre-employment vetting checks

We recognise the importance of responding to and dealing with any concerns in a timely manner to safeguard the welfare of children.

## **Definition of low-level concerns**

The term 'low-level' concern is any concern – no matter how small – that an adult working in or on behalf of the school may have acted in a way that:

Is inconsistent with the staff code of conduct, including inappropriate conduct outside of work, **and**

Does not meet the allegations threshold or is otherwise not considered serious enough to consider a referral to the designated officer at the local authority

Examples of such behaviour could include, but are not limited to:

Being overly friendly with children

Having favourites

Taking photographs of children on their mobile phone

Engaging with a child on a one-to-one basis in a secluded area or behind a closed door

Humiliating pupils

## **Sharing low-level concerns**

We recognise the importance of creating a culture of openness, trust and transparency to encourage all staff to confidentially share low-level concerns so that they can be addressed appropriately.

We will create this culture by:

Ensuring staff are clear about what appropriate behaviour is, and are confident in distinguishing expected and appropriate behaviour from concerning, problematic or inappropriate behaviour, in themselves and others

Empowering staff to share any low-level concerns as per section 7.7 of this policy

Empowering staff to self-refer

Addressing unprofessional behaviour and supporting the individual to correct it at an early stage

Providing a responsive, sensitive and proportionate handling of such concerns when they are raised

Helping to identify any weakness in the school's safeguarding system

## **Responding to low-level concerns**

If the concern is raised via a third party, the DSL will collect evidence where necessary by speaking:

Directly to the person who raised the concern, unless it has been raised anonymously

To the individual involved and any witnesses

The DSL will use the information collected to categorise the type of behaviour and determine any further action, after taking advice from the Headteacher, who will be the ultimate decision maker.

## **Record keeping**

All low-level concerns will be recorded in writing. In addition to details of the concern raised, records will include the context in which the concern arose, any action taken and the rationale for decisions and action taken.

Records will be:

Kept confidential, held securely and comply with the DPA 2018 and UK GDPR

Reviewed so that potential patterns of concerning, problematic or inappropriate behaviour can be identified. Where a pattern of such behaviour is identified, we will decide on a course of action, either through our disciplinary procedures or, where a pattern of behaviour moves from a concern to meeting the harms threshold as described in section 1 of this appendix, we will refer it to the LADO

Retained at least until the individual leaves employment at the school

Where a low-level concern relates to a supply teacher or contractor, we will notify the individual's employer, so any potential patterns of inappropriate behaviour can be identified.

## **References**

We will not include low-level concerns in references unless:

The concern (or group of concerns) has met the threshold for referral to the LADO and is found to be substantiated; and/or

The concern (or group of concerns) relates to issues which would ordinarily be included in a reference, such as misconduct or poor performance

## Appendix 4: specific safeguarding issues

### Children missing from education

A child who is absent from or goes missing from education, particularly repeatedly or for prolonged periods, can be a warning sign of a range of safeguarding issues. This might include abuse or neglect, such as sexual abuse or exploitation or child criminal exploitation, or issues such as mental health problems, substance abuse, radicalisation, FGM, HBVA or forced marriage.

There are many circumstances where a child may become absent / missing from education, but some children are particularly at risk. These include children who:

- ✓ Are at risk of harm or neglect
- ✓ Are at risk of forced marriage or FGM
- ✓ Come from Gypsy, Roma, or Traveller families
- ✓ Come from the families of service personnel
- ✓ Go missing or run away from home or care
- ✓ Are supervised by the youth justice system
- ✓ Cease to attend a school
- ✓ Come from new migrant families

We will follow our procedures for unauthorised absence and for dealing with children who are absent or go missing from education, particularly on repeat occasions or for prolonged periods, to help identify the risk of abuse and neglect, including sexual exploitation, and to help prevent the risks of going missing in future. This includes informing the local authority if a child leaves the school without a new school being named, and adhering to requirements with respect to sharing information with the local authority, when applicable, when removing a child's name from the admission register at non-standard transition points. We will seek advice from the LA Children Missing Education Officer.

Staff will be trained in signs to look out for and the individual triggers to be aware of when considering the risks of potential safeguarding concerns which may be related to being missing, such as travelling to conflict zones, FGM, HBVA and forced marriage.

If a staff member suspects that a child is suffering from harm or neglect, we will follow local child protection procedures, including with respect to making reasonable enquiries. We will make an immediate referral to the local authority children's social care team, and the police, if the child is suffering or likely to suffer from harm, or in immediate danger.

### Child criminal exploitation

Child criminal exploitation (CCE) is a form of abuse where an individual or group takes advantage of an imbalance of power to coerce, control, manipulate or deceive a child into criminal activity, in exchange for something the victim needs or wants, and/or for the financial or other advantage of the perpetrator or facilitator, and/or through violence or the threat of violence.

The abuse can be perpetrated by males or females, and children or adults. It can be a one-off occurrence or a series of incidents over time, and range from opportunistic to complex organised abuse.

The victim can be exploited even when the activity appears to be consensual. It does not always involve physical contact and can happen online. For example, young people may be forced to work in cannabis factories, coerced into moving drugs or money across the country (county lines), forced to shoplift or pickpocket, or to threaten other young people.

Indicators of CCE can include a child:

Appearing with unexplained gifts or new possessions

Associating with other young people involved in exploitation

Suffering from changes in emotional wellbeing

Misusing drugs and alcohol

Going missing for periods of time or regularly coming home late

Regularly missing school or education

Not taking part in education

If a member of staff suspects CCE, they will discuss this with the DSL. The DSL will trigger the local safeguarding procedures, including a referral to the local authority's children's social care team and the police, if appropriate. The DSL will seek advice from the multi-agency Complex Safeguarding Team if they are concerned that a child is at risk of criminal exploitation.

## **Child sexual exploitation**

Child sexual exploitation (CSE) is a form of child sexual abuse where an individual or group takes advantage of an imbalance of power to coerce, manipulate or deceive a child into sexual activity, in exchange for something the victim needs or wants and/or for the financial advantage or increased status of the perpetrator or facilitator. It may, or may not, be accompanied by violence or threats of violence.

The abuse can be perpetrated by males or females, and children or adults. It can be a one-off occurrence or a series of incidents over time, and range from opportunistic to complex organised abuse.

The victim can be exploited even when the activity appears to be consensual. Children or young people who are being sexually exploited may not understand that they are being abused. They often trust their abuser and may be tricked into believing they are in a loving, consensual relationship.

CSE can include both physical contact (penetrative and non-penetrative acts) and non-contact sexual activity. It can also happen online. For example, young people may be persuaded or forced to share sexually explicit images of themselves, have sexual conversations by text, or take part in sexual activities using a webcam. CSE may also occur without the victim's immediate knowledge, for example through others copying videos or images.

In addition to the CCE indicators above, indicators of CSE can include a child:

Having an older boyfriend or girlfriend

Suffering from sexually transmitted infections or becoming pregnant

If a member of staff suspects CSE, they will discuss this with the DSL. The DSL will trigger the local safeguarding procedures, including a referral to the local authority's children's social care team and the police, if appropriate. The DSL will seek advice from the multi-agency Complex Safeguarding Team if they are concerned that a child is at risk of sexual exploitation.

## **Domestic abuse**

In line with the Domestic Abuse Act 2021, children who live in household where there is domestic abuse and/or violence that occurs between family members are themselves identified as being victims, due to the serious, long-lasting emotional and psychological impact this can have. In some cases, a child may blame themselves for the abuse or may have had to leave the family home as a result.

Types of domestic abuse include intimate partner violence, abuse by family members, teenage relationship abuse and child/adolescent to parent violence and abuse. It can be physical, sexual, financial, psychological or emotional. It can be coercive and controlling behaviours. It can also include ill treatment that isn't physical, as well as witnessing the ill treatment of others – for example, the impact of all forms of domestic abuse on children. Anyone can be a victim of domestic abuse, regardless of gender, age, ethnicity, socioeconomic status, sexuality or background.

Older children may also experience domestic abuse and/or violence in their own personal relationships. This can include sexual harassment. The Domestic Abuse Act covers all children over the age of 16.

Living with domestic abuse and/or violence can have a serious, long-lasting emotional and psychological impact on children and affect their health, wellbeing, development and ability to learn.

Within Rochdale, our Police force uses Operation Encompass. This means that if police are called to an incident of domestic abuse and any children in the household have experienced the incident, the police will

inform the key adult in school (usually the designated safeguarding lead) before the child or children arrive at school the following day. This enables the DSL to consider any support that may be required according to the child's needs and to update school safeguarding records. The DSL may wish to contact the Operation Encompass helpline (telephone number 0204 523 9990) to seek advice about what support may be useful for the child and/or speak to their Early Help Locality Team, or check the local authority domestic abuse webpage for up to date information about local support service; [About who can help with domestic abuse | Who can help with domestic abuse | Rochdale Borough Council](#)

The DSL will provide support according to the child's needs and update records about their circumstances.

Further guidance can be found here; [da\\_toolkit\\_-\\_schools\\_and\\_educational\\_settings\\_v5.pdf \(rochdalesafeguarding.com\)](#)

## Homelessness

Being homeless or being at risk of becoming homeless presents a real risk to a child's welfare.

The DSL will be aware of contact details and referral routes in to the local housing authority so they can raise/progress concerns at the earliest opportunity (where appropriate and in accordance with local procedures).

Where a child has been harmed or is at risk of harm, the DSL will also make a referral to children's social care.

## So-called 'honour-based' violence and abuse (including FGM and forced marriage)

So-called 'honour-based' abuse (HBVA) encompasses incidents or crimes committed to protect or defend the honour of the family and/or community, including FGM, forced marriage, and practices such as breast ironing.

Abuse committed in this context often involves a wider network of family or community pressure and can include multiple perpetrators.

All forms of HBVA are abuse and will be handled and escalated as such. All staff will be alert to the possibility of a child being at risk of HBVA or already having suffered it. If staff have a concern, they will speak to the DSL, who will activate local safeguarding procedures.

## FGM

The DSL will make sure that staff have access to appropriate training to equip them to be alert to children affected by FGM or at risk of FGM.

Section 7.3 of this policy sets out the procedures to be followed if a staff member discovers that an act of FGM appears to have been carried out or suspects that a pupil is at risk of FGM.

Indicators that FGM has already occurred include:

- ✓ A pupil confiding in a professional that FGM has taken place
- ✓ A mother/family member disclosing that FGM has been carried out
- ✓ A family/pupil already being known to social services in relation to other safeguarding issues
- ✓ A girl:
  - Having difficulty walking, sitting or standing, or looking uncomfortable
  - Finding it hard to sit still for long periods of time (where this was not a problem previously)
  - Spending longer than normal in the bathroom or toilet due to difficulties urinating
  - Having frequent urinary, menstrual or stomach problems
  - Avoiding physical exercise or missing PE
  - Being repeatedly absent from school, or absent for a prolonged period
  - Demonstrating increased emotional and psychological needs – for example, withdrawal or depression, or significant change in behaviour



- Being reluctant to undergo any medical examinations
- Asking for help, but not being explicit about the problem
- Talking about pain or discomfort between her legs

Potential signs that a pupil may be at risk of FGM include:

- ✓ The girl's family having a history of practising FGM (this is the biggest risk factor to consider)
- ✓ FGM being known to be practised in the girl's community or country of origin
- ✓ A parent or family member expressing concern that FGM may be carried out
- ✓ A family not engaging with professionals (health, education or other) or already being known to social care in relation to other safeguarding issues
- ✓ A girl:
  - Having a mother, older sibling or cousin who has undergone FGM
  - Having limited level of integration within UK society
  - Confiding to a professional that she is to have a "special procedure" or to attend a special occasion to "become a woman"
  - Talking about a long holiday to her country of origin or another country where the practice is prevalent, or parents/carers stating that they or a relative will take the girl out of the country for a prolonged period
  - Requesting help from a teacher or another adult because she is aware or suspects that she is at immediate risk of FGM
  - Talking about FGM in conversation – for example, a girl may tell other children about it (although it is important to take into account the context of the discussion)
  - Being unexpectedly absent from school
  - Having sections missing from her 'red book' (child health record) and/or attending a travel clinic or equivalent for vaccinations/anti-malarial medication

The above indicators and risk factors are not intended to be exhaustive. School should always seek advice from EHASH if they are concerned.

### **Forced marriage**

Forcing a person into marriage is a crime. A forced marriage is one entered into without the full and free consent of one or both parties and where violence, threats, or any other form of coercion is used to cause a person to enter into a marriage. Threats can be physical or emotional and psychological.

Staff will receive training around forced marriage and the presenting symptoms. We are aware of the 'one chance' rule, i.e. we may only have one chance to speak to the potential victim and only one chance to save them.

If a member of staff suspects that a pupil is being forced into marriage, they will speak to the pupil about their concerns in a secure and private place. They will then report this to the DSL.

The DSL will:

- ✓ Speak to the pupil about the concerns in a secure and private place
- ✓ Follow local safeguarding procedures and contact EHASH
- ✓ Seek advice from the Forced Marriage Unit on 020 7008 0151 or [fmfu@fco.gov.uk](mailto:fmfu@fco.gov.uk)
- ✓ Refer the pupil to support services and provision as appropriate.

### **Preventing radicalisation**

**Radicalisation** refers to the process by which a person comes to support terrorism and extremist ideologies associated with terrorist groups

**Extremism** is vocal or active opposition to fundamental British values, such as democracy, the rule of law, individual liberty, and mutual respect and tolerance of different faiths and beliefs. This also includes calling for the death of members of the armed forces

**Terrorism** is an action that:

- Endangers or causes serious violence to a person/people;
- Causes serious damage to property; or
- Seriously interferes or disrupts an electronic system

The use or threat of terrorism must be designed to influence the government or to intimidate the public and is made for the purpose of advancing a political, religious or ideological cause.

Schools have a duty to prevent children from being drawn into terrorism. The DSL will undertake Prevent awareness training and make sure that staff have access to appropriate training to equip them to identify children at risk. The local authority Equality and Community Cohesion Officer, Muhammad Abdulaleem can assist schools in providing appropriate training.

We will assess the risk of children in our school being drawn into terrorism. This assessment will be based on an understanding of the potential risk in our local area, in collaboration with our local safeguarding partners and local police force.

We will ensure that suitable internet filtering is in place, and equip our pupils to stay safe online at school and at home.

There is no single way of identifying an individual who is likely to be susceptible to an extremist ideology. Radicalisation can occur quickly or over a long period.

Staff will be alert to changes in pupils' behaviour.

The government website [Educate Against Hate - Prevent Radicalisation & Extremism](#) and [NSPCC](#) say that signs that a pupil is being radicalised can include:

- ✓ Refusal to engage with, or becoming abusive to, peers who are different from themselves
- ✓ Becoming susceptible to conspiracy theories and feelings of persecution
- ✓ Changes in friendship groups and appearance
- ✓ Rejecting activities they used to enjoy
- ✓ Converting to a new religion
- ✓ Isolating themselves from family and friends
- ✓ Talking as if from a scripted speech
- ✓ An unwillingness or inability to discuss their views
- ✓ A sudden disrespectful attitude towards others
- ✓ Increased levels of anger
- ✓ Increased secretiveness, especially around internet use
- ✓ Expressions of sympathy for extremist ideologies and groups, or justification of their actions
- ✓ Accessing extremist material online, including on Facebook or Twitter
- ✓ Possessing extremist literature
- ✓ Being in contact with extremist recruiters and joining, or seeking to join, extremist organisations

Children who are at risk of radicalisation may have low self-esteem, or be victims of bullying or discrimination. It is important to note that these signs can also be part of normal teenage behaviour – staff should have confidence in their instincts and seek advice if something feels wrong.

If staff are concerned about a pupil, they will follow our procedures set out in section 7.5 of this policy, including discussing their concerns with the DSL. Staff should **always** take action if they are worried, irrespective of the age of the child involved.

## **Child-on-child abuse**

Child-on-child abuse is when children abuse other children. This type of abuse can take place inside and outside of school, both face-to-face and online, and can occur simultaneously between the two.

Our school has a zero-tolerance approach to sexual violence and sexual harassment. We recognise that even if there are no reports, that doesn't mean that this kind of abuse isn't happening.

Child-on-child abuse is most likely to include, but may not be limited to:

Bullying (including cyber-bullying, prejudice-based and discriminatory bullying)

Abuse in intimate personal relationships between peers (this is sometimes known as 'teenage relationship abuse')

Physical abuse such as hitting, kicking, shaking, biting, hair pulling, or otherwise causing physical harm (this may include an online element which facilitates, threatens and/or encourages physical abuse)

Sexual violence, such as rape, assault by penetration and sexual assault (this may include an online element which facilitates, threatens and/or encourages sexual violence)

Sexual harassment, such as sexual comments, remarks, jokes and online sexual harassment, which may be standalone or part of a broader pattern of abuse

Causing someone to engage in sexual activity without consent, such as forcing someone to strip, touch themselves sexually, or to engage in sexual activity with a third party

Consensual and non-consensual sharing of nudes and semi nudes images and/or videos (also known as sexting or youth produced sexual imagery)

Upskirting, which typically involves taking a picture under a person's clothing without their permission, with the intention of viewing their genitals or buttocks to obtain sexual gratification, or cause the victim humiliation, distress or alarm

Initiation/hazing type violence and rituals (this could include activities involving harassment, abuse or humiliation used as a way of initiating a person into a group and may also include an online element)

Where children abuse their peers online, this can take the form of, for example, abusive, harassing, and misogynistic/ misandrist messages; the consensual and non-consensual sharing of indecent images, especially around chat groups; and the sharing of abusive images and pornography, to those who don't want to receive such content.

If staff have any concerns about child-on-child abuse, or a child makes a report to them, they will follow the procedures set out in section 7 of this policy, as appropriate. In particular, section 7.8 and 7.9 set out more detail about our school's approach to this type of abuse.

When considering instances of harmful sexual behaviour between children, we will consider their ages and stages of development. We recognise that children displaying harmful sexual behaviour have often experienced their own abuse and trauma, and will offer them appropriate support.

## **Sexual violence and sexual harassment between children in schools**

Sexual violence and sexual harassment can occur:

Between children of any age and sex

Through a group of children sexually assaulting or sexually harassing a single child or group of children

Online and face to face (both physically and verbally)

Sexual violence and sexual harassment exist on a continuum and may overlap.

Children who are victims of sexual violence and sexual harassment will likely find the experience stressful and distressing. This will, in all likelihood, adversely affect their educational attainment and will be exacerbated if the alleged perpetrator(s) attends the same school.

If a victim reports an incident, it is essential that staff make sure they are reassured that they are being taken seriously and that they will be supported and kept safe. A victim should never be given the impression that they are creating a problem by reporting sexual violence or sexual harassment. Nor should a victim ever be made to feel ashamed for making a report.

When supporting victims, staff will:

- ✓ Reassure victims that the law on child-on-child abuse is there to protect them, not criminalise them
- ✓ Regularly review decisions and actions, and update policies with lessons learnt
- ✓ Look out for potential patterns of concerning, problematic or inappropriate behaviour, and decide on a course of action where we identify any patterns
- ✓ Consider if there are wider cultural issues within the school that enabled inappropriate behaviour to occur and whether revising policies and/or providing extra staff training could minimise the risk of it happening again
- ✓ Remain alert to the possible challenges of detecting signs that a child has experienced sexual violence, and show sensitivity to their needs

Some groups are potentially more at risk. Evidence shows that girls, children with SEN and/or disabilities, and lesbian, gay, bisexual and transgender (LGBT) children are at greater risk.

Staff should be aware of the importance of:

Challenging inappropriate behaviours, creating a culture where sexism, misogyny and misandry are not tolerated

Utilising research and evidence-based practice to support respectful and safe school culture

Making clear that sexual violence and sexual harassment is not acceptable, will never be tolerated and is not an inevitable part of growing up

Challenging physical behaviours (potentially criminal in nature), such as grabbing bottoms, breasts and genitalia, pulling down trousers, flicking bras and lifting up skirts. Dismissing or tolerating such behaviours risks normalising them

If staff have any concerns about sexual violence or sexual harassment, or a child makes a report to them, they will follow the procedures set out in section 7 of this policy, as appropriate. In particular, section 7.8 and 7.9 set out more detail about our school's approach to this type of abuse.

## **Serious youth violence**

Indicators which may signal that a child is at risk from, or involved with, serious violent crime may include:

Increased absence from school

Change in friendships or relationships with older individuals or groups

Significant decline in performance

Signs of self-harm or a significant change in wellbeing

Signs of assault or unexplained injuries

Unexplained gifts or new possessions (this could indicate that the child has been approached by, or is involved with, individuals associated with criminal networks or gangs and may be at risk of criminal exploitation (see above))

Risk factors which increase the likelihood of involvement in serious violence include:

Being male

Having been frequently absent or permanently excluded from school

Having experienced child maltreatment

Having been involved in offending, such as theft or robbery

Children may carry weapons, including knives, either because they have been manipulated or forced to do so, or because they feel this will help them to protect themselves. If a child is known or suspected to be carrying a weapon, the DSL must be informed and the Rochdale knife protocol for schools followed.

Staff will be aware of these indicators and risk factors. If a member of staff has a concern about a pupil being involved in, or at risk of, serious violence, they will report this to the DSL.

## **Private fostering**

A private fostering arrangement is one that is made without the involvement of a local authority for the care of a child under the age of 16 years (under 18, if disabled) by someone other than a parent or close relative, in their own home, with the intention that it should last for 28 days or more. The legislation governing private fostering is the 'Children (Private Arrangements for Fostering) Regulations 2005'

Most frequently, young people are in private foster care for the following reasons:

- children from other countries sent to live in the UK with extended family
- host families for language schools
- parental ill-health
- where parents who have moved away, but the child stays behind, including where families may have had unsuccessful applications to remain in the UK following Brexit
- teenagers estranged from their families

There may also be private foster care arrangements for the following reasons;

- children brought from outside the UK with a view to adoption
- trafficked children

Current arrangements for the regulation of private fostering originate from concern following the death of Victoria Climbié in 2000. Victoria was privately fostered by her great aunt. Following this, the Children (Private Arrangement for Fostering) Regulations 2005 set out the duties of local authorities in their arrangements for private fostering, and national minimum standards for local authorities were published in 2005.

Given the 'hidden' nature of much private fostering, local authorities have a duty to raise awareness of the need to notify the local Children's Services department and schools have a vital role within this, as the people who see children and families on a day to day basis.

Further information is available at: [Private fostering information from Childrens Act](#)

Staff will be aware of these indicators and risk factors. If a member of staff has a concern about a pupil being privately fostered, they will report this to the DSL, who will seek advice from the EHASH.

## **Checking the identity and suitability of visitors**

All visitors will be required to verify their identity to the satisfaction of staff and to leave their belongings, including their mobile phone(s), in a safe place during their visit.

If the visitor is unknown to the setting, we will check their credentials and reason for visiting before allowing them to enter the setting. Visitors should be ready to produce identification.

Visitors are expected to sign in using the visitors' record and wear a visitor's badge that is visible to staff in school and identifies them as a visitor, distinct from staff ID

Visitors to the school who are visiting for a professional purpose, such as educational psychologists and school improvement officers, will be asked to show photo ID and:

- ✓ Will be asked to show their DBS certificate, which will be checked alongside their photo ID; or

- ✓ The organisation sending the professional, such as the LA, will provide prior written confirmation that an appropriate level of DBS check has been carried out in which case, school will not request sight of their DBS.

All other visitors, including visiting speakers, will be accompanied by a member of staff at all times. We will not invite into the school any speaker who is known to disseminate extremist views, and will carry out appropriate checks to ensure that any individual or organisation using school facilities is not seeking to disseminate extremist views or radicalise pupils or staff.

School staff are trained that they should politely challenge any unaccompanied adults who they encounter inside the school building/ grounds, to ascertain the reason for their visit and if appropriate, accompany them.